

andská oblast

costa
(quebradas)

sierra
(altiplano – puna)

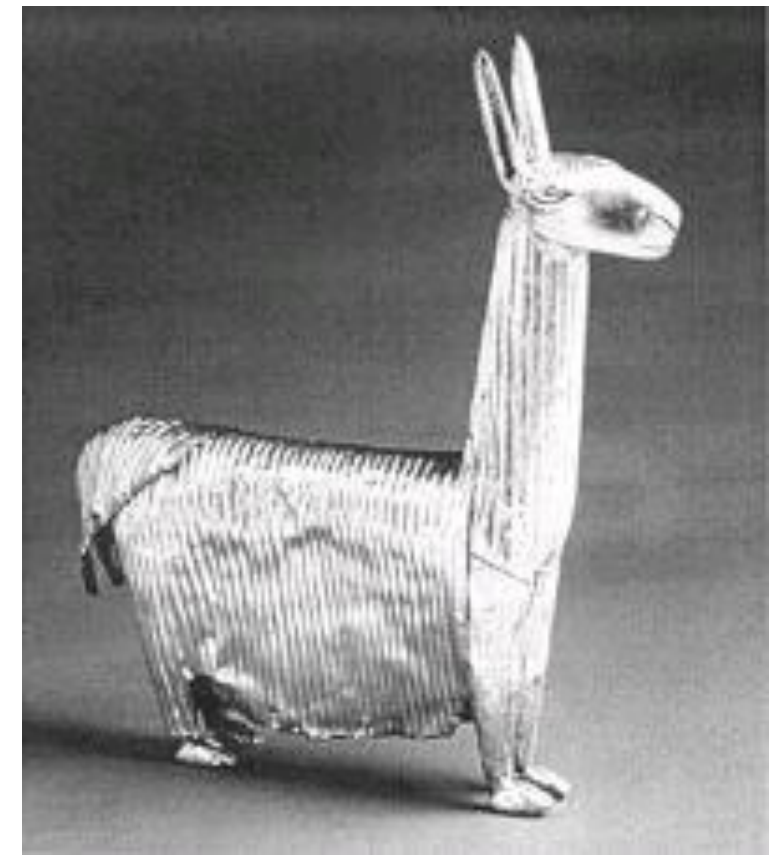
selva (montaña)

(Spondylus)



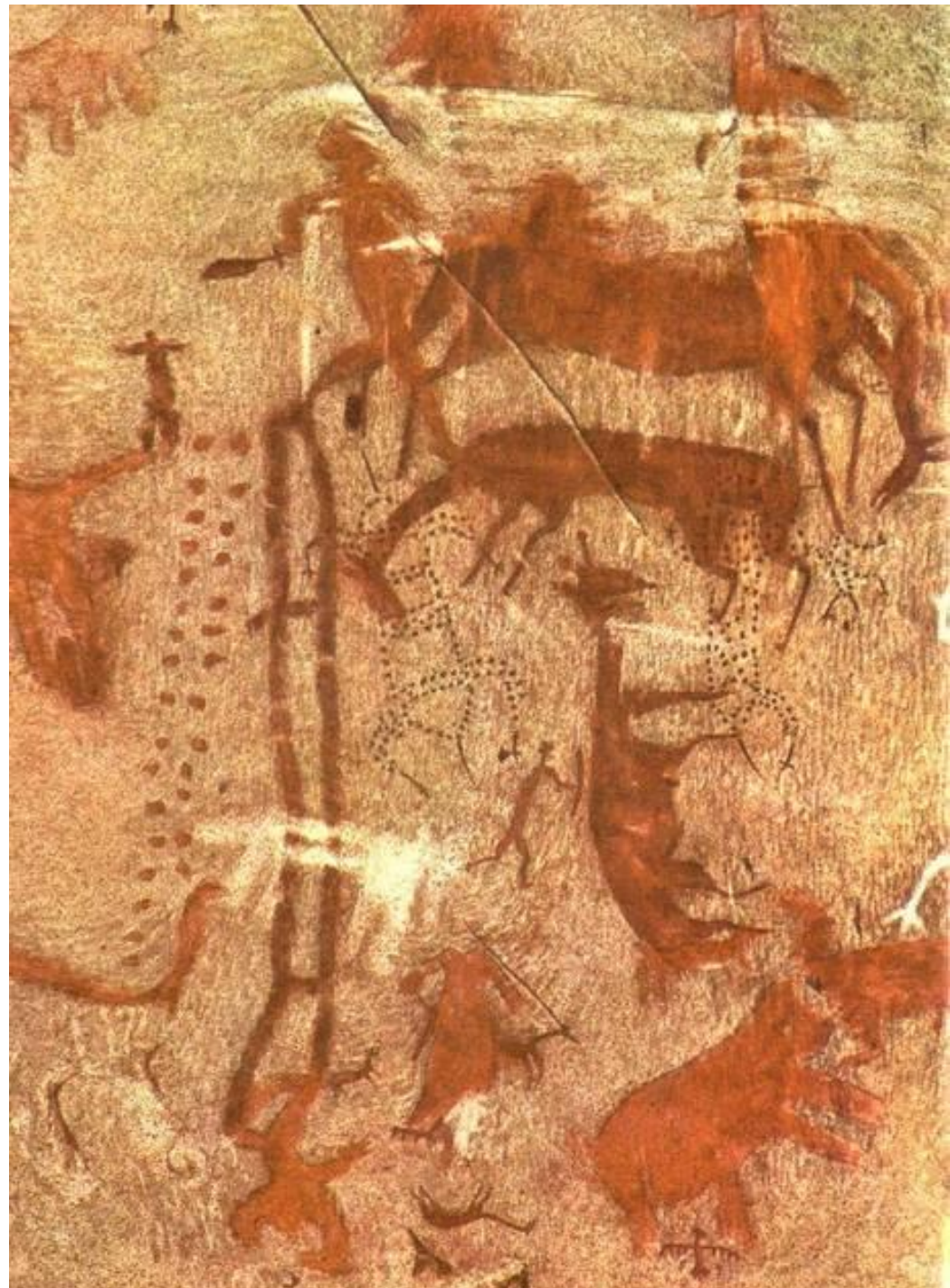
Central and Southern
Andes Culture Area

750 km
mi



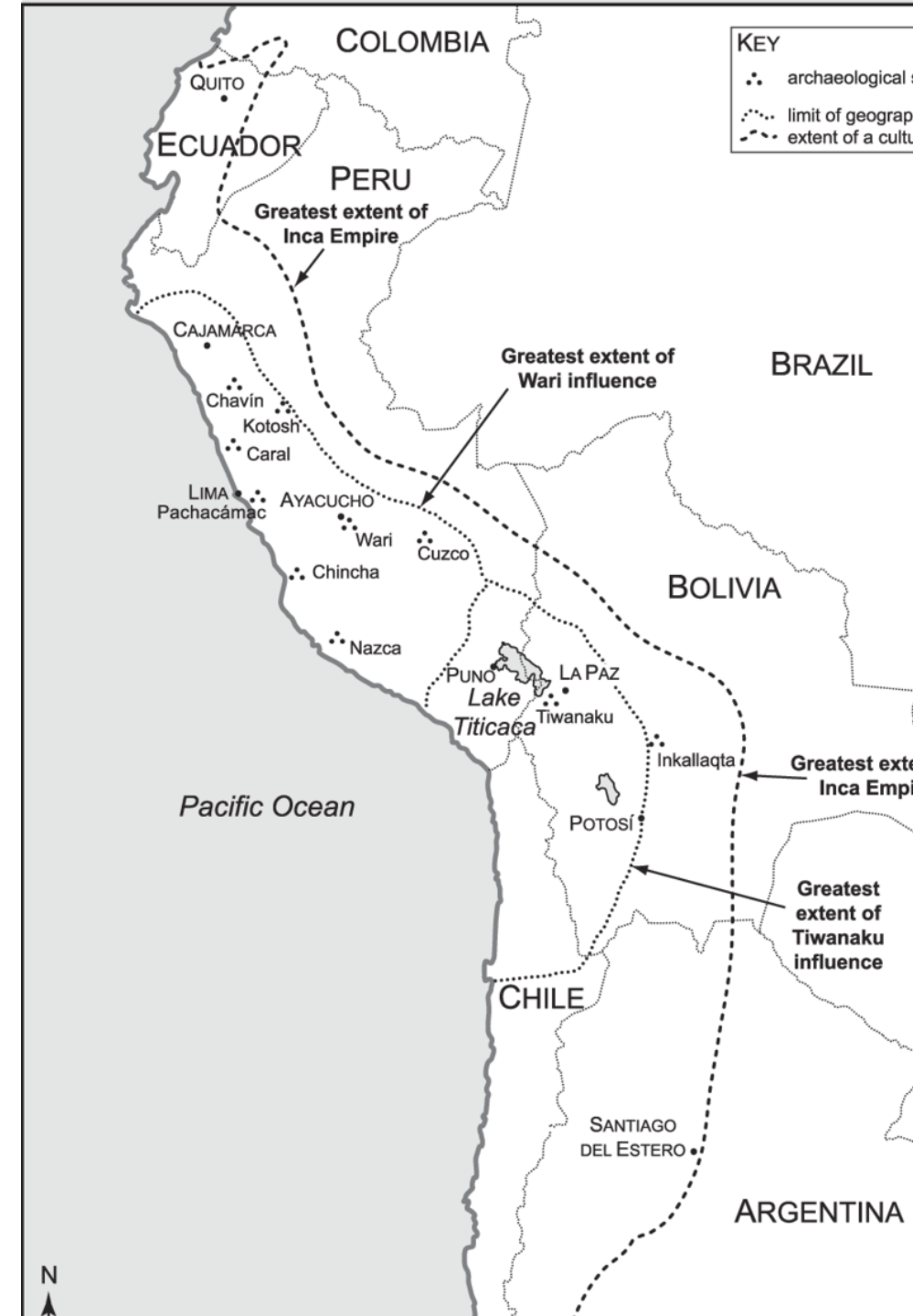


(Toquepala)



horizont – období kulturní homogenity, projevující se v materiální kultuře

- předkeramické období (3.-2.tis. před n.l.) – Caral, Valdivia
- první horizont - Chavín (900-200 před n.l.)
- první přechodné období – Vicús, Paracas, Nazca, Mochica (200 před n.l. – 500 n.l.)
- druhý horizont - Tiahuanaco-Huari (7.-10. stol. n.l.)
- druhé přechodné období - Chimu (10.-13. stol. n.l.)
- třetí horizont - Inkové



brambory

quinoa (merlík) →

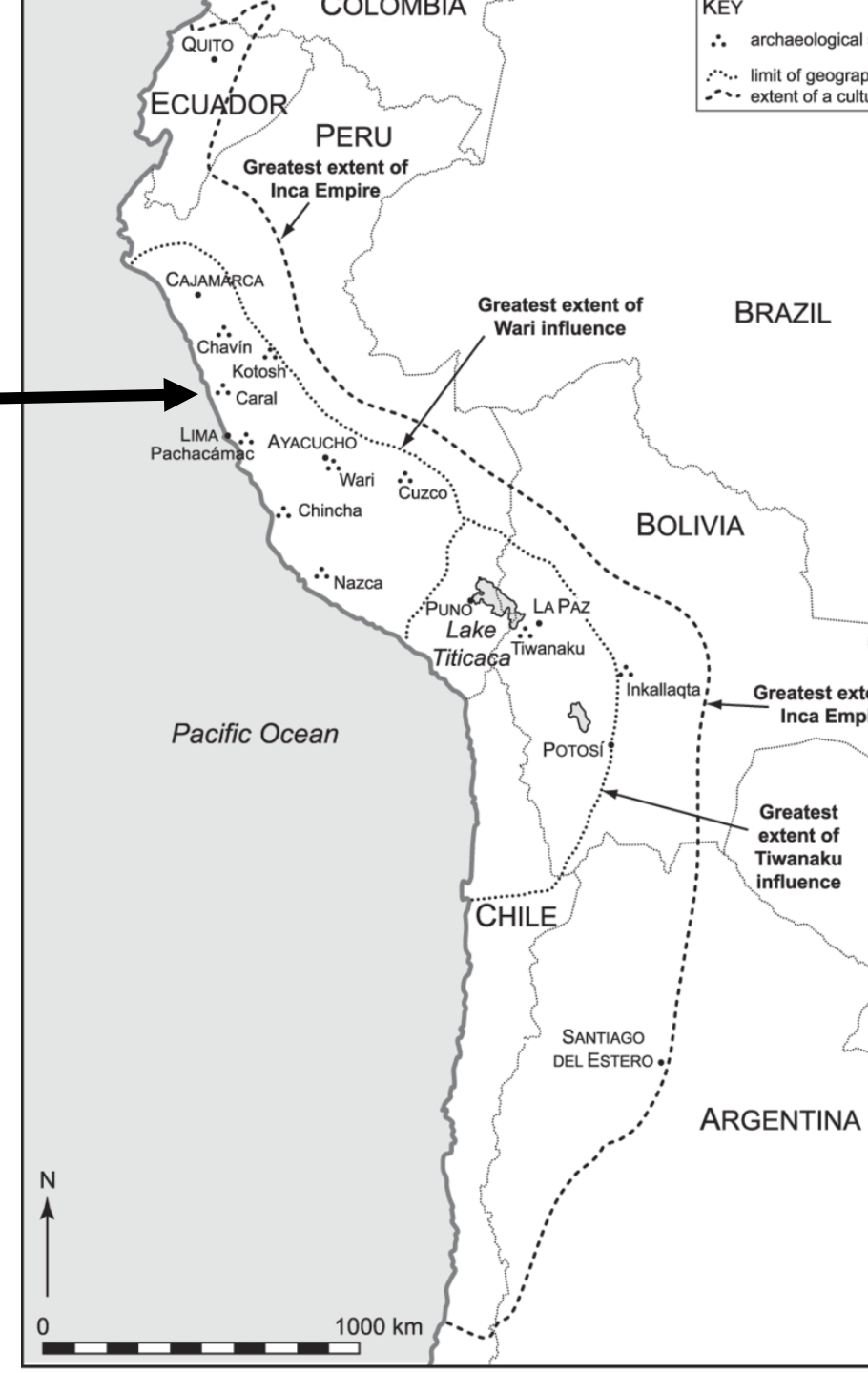
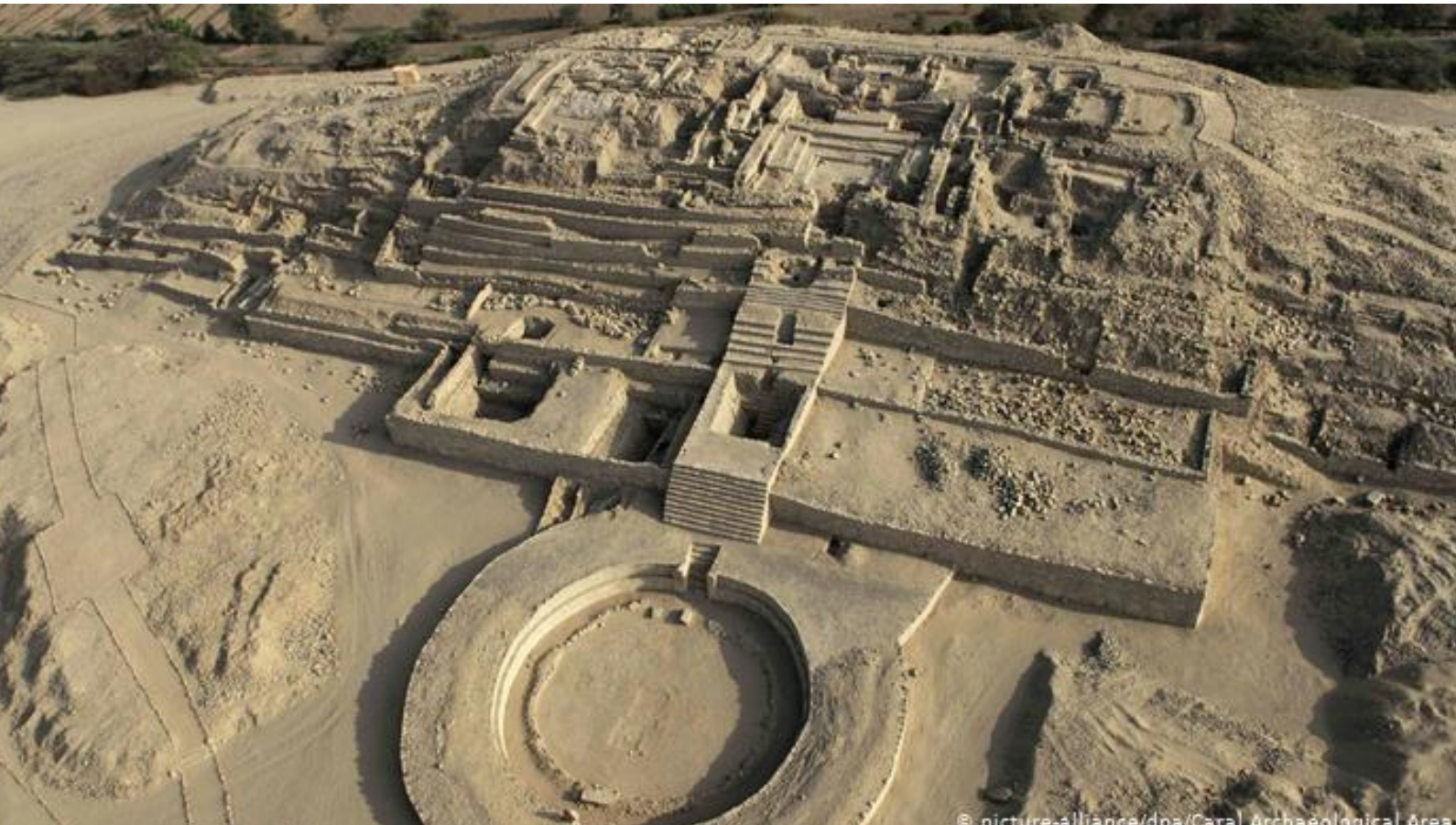


andenes





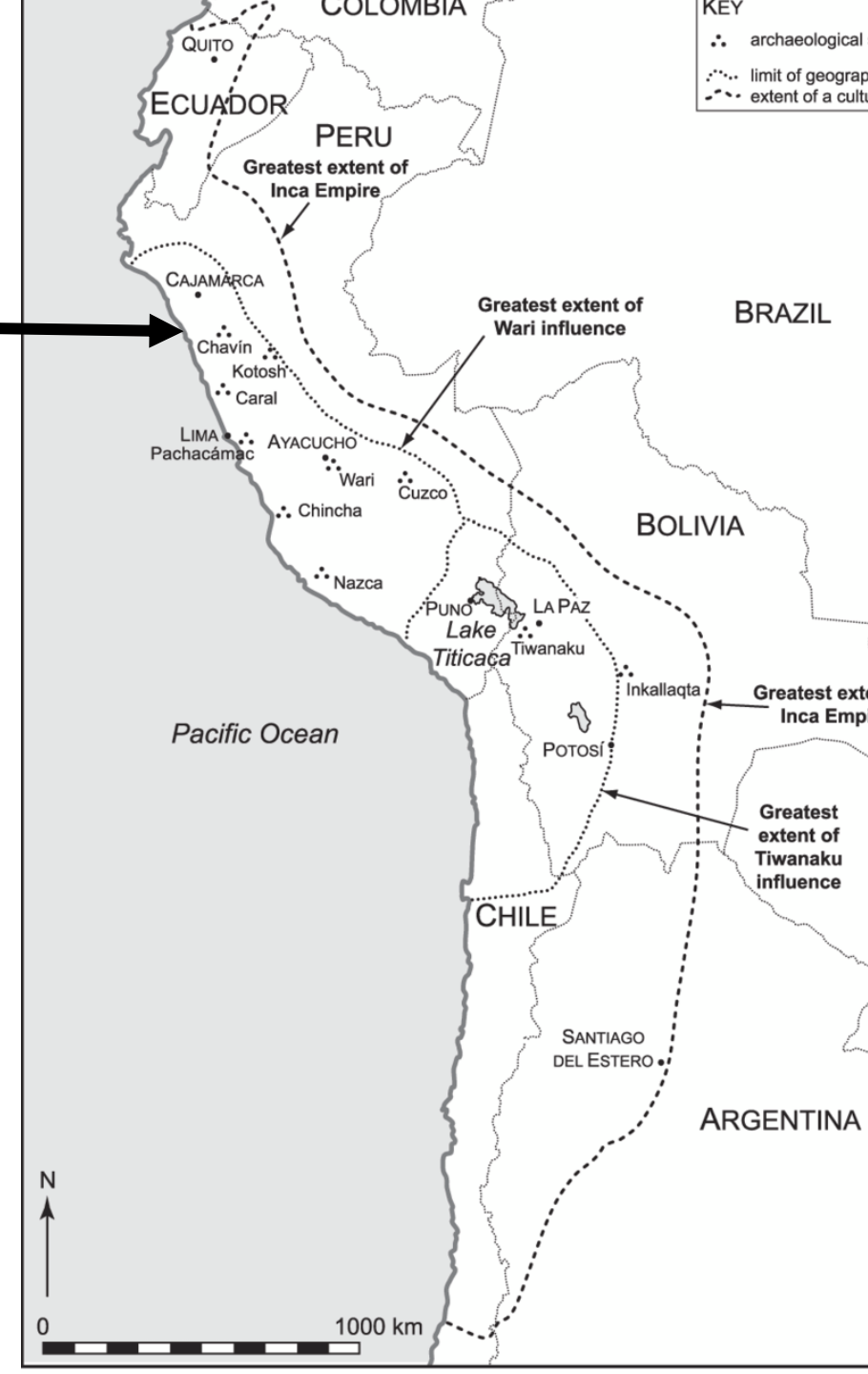
Caral
(2,600-2,000 před
n.l.)



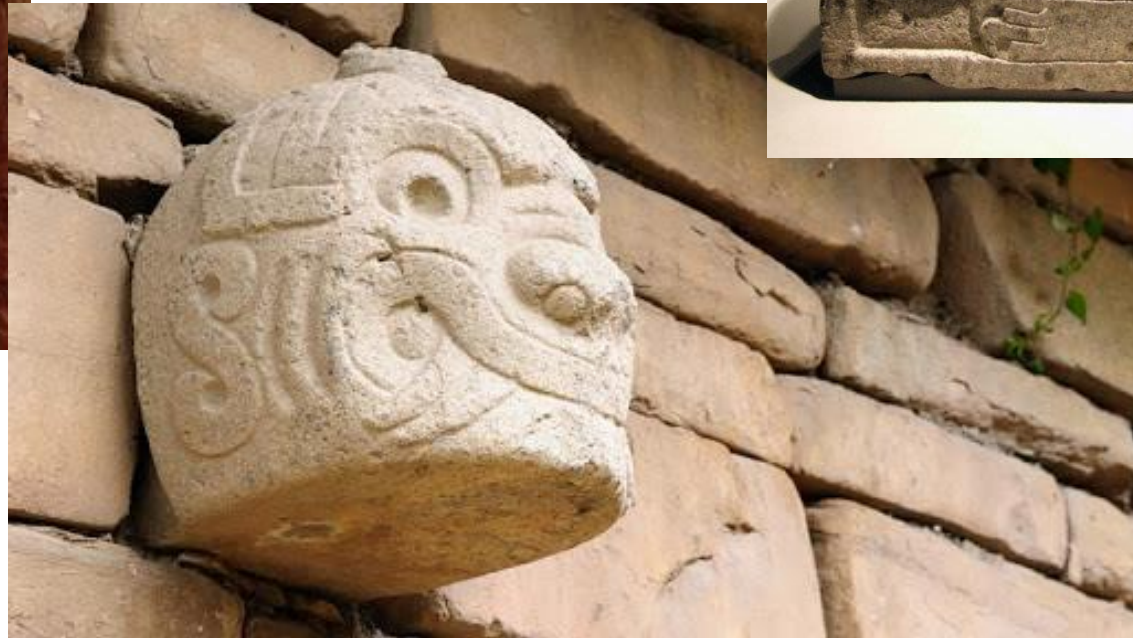
Valdivia (2000 před n.l.)



první horizont Chavín de Huántar (900-200 před n.l.)



← Tello Obelisk



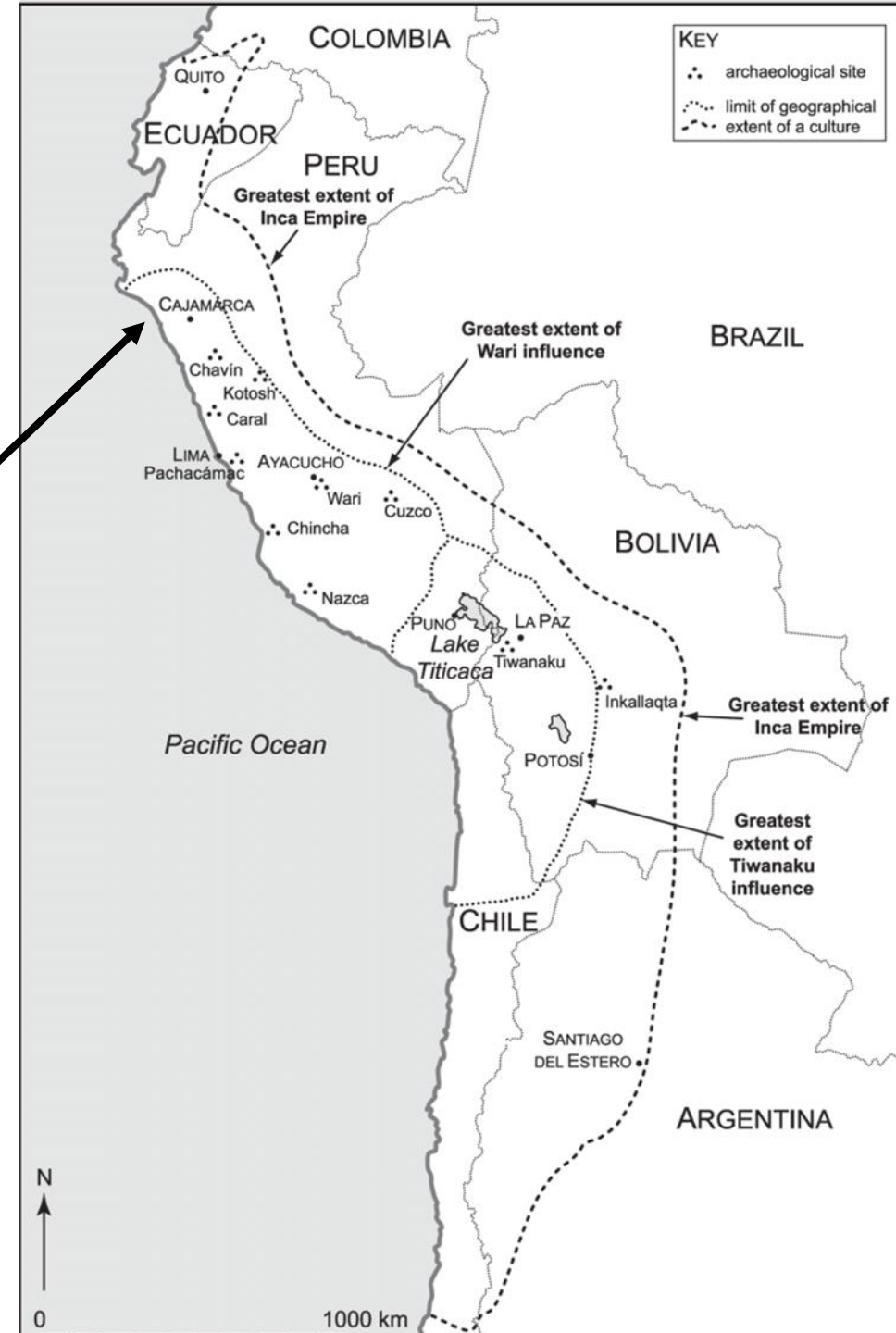


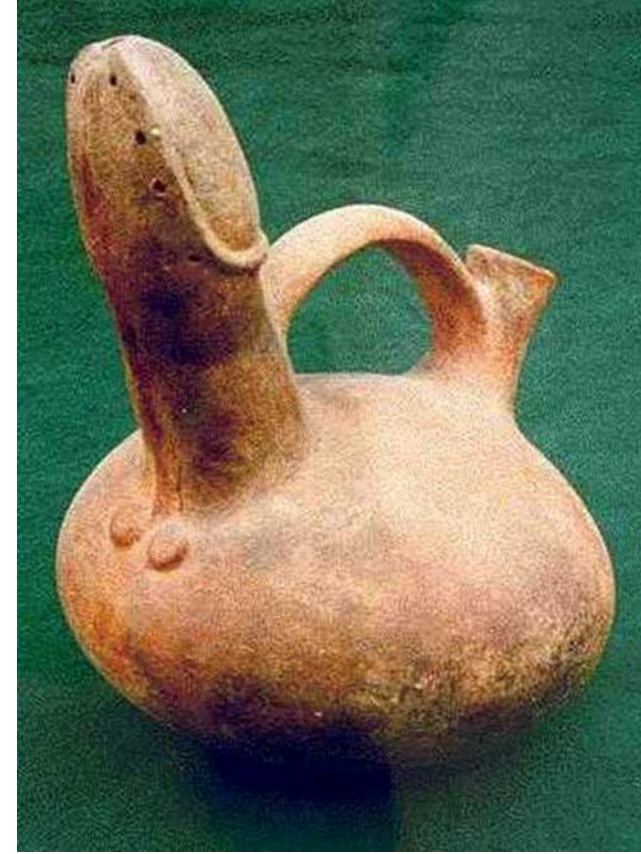
první přechodné období (200 před n.l.- 500 n. l.)

señoríos



Vicús





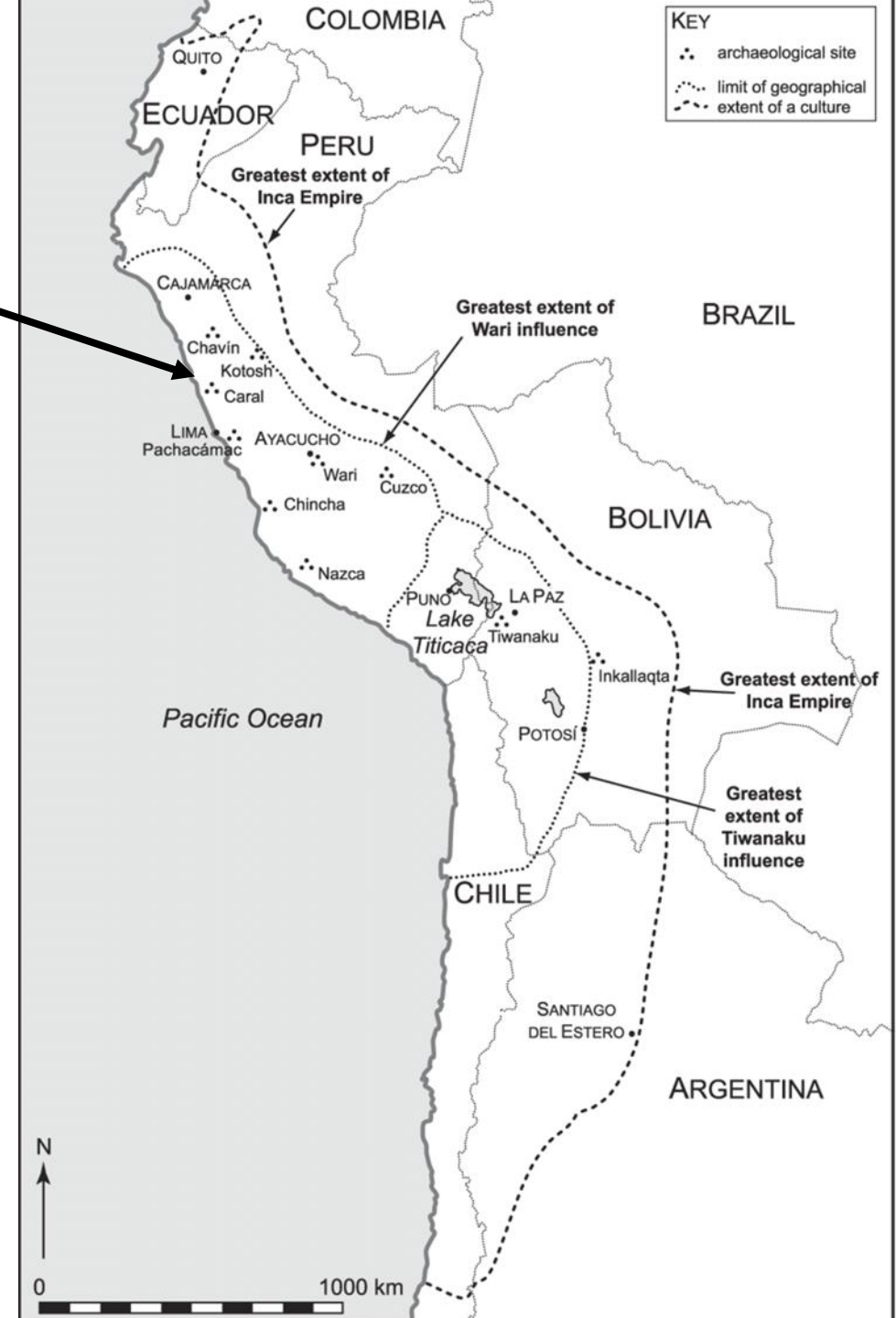


Huaca del Sol

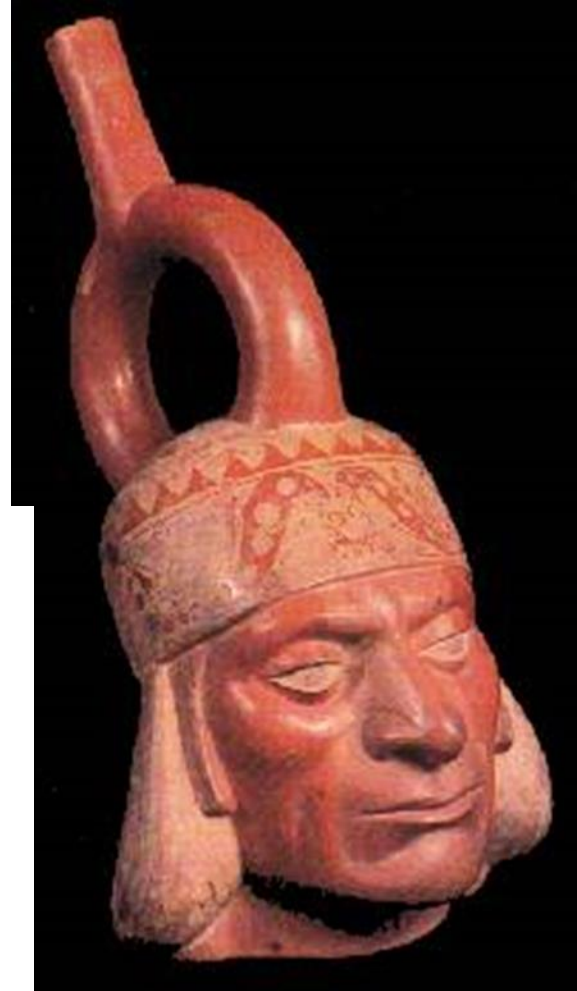
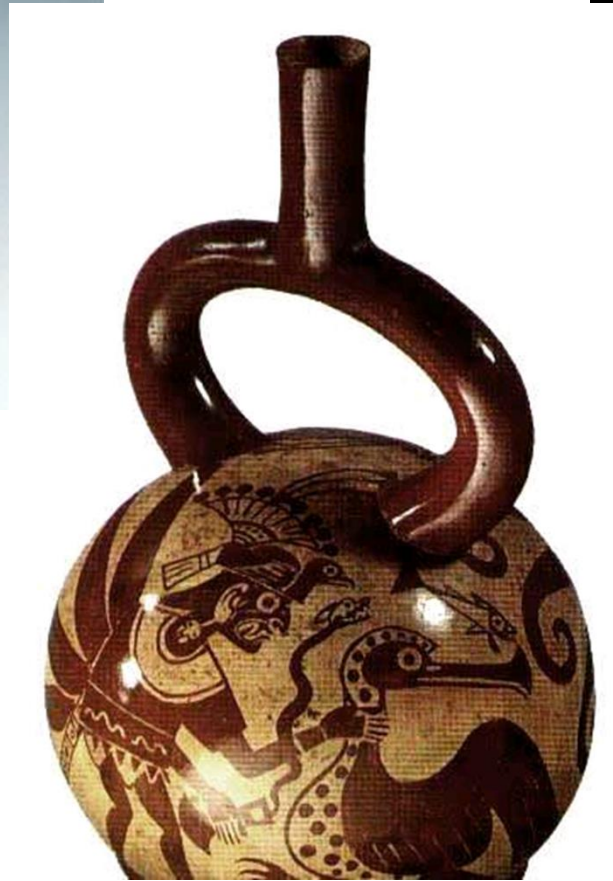
Huaca de la Luna

Moche

ayllu









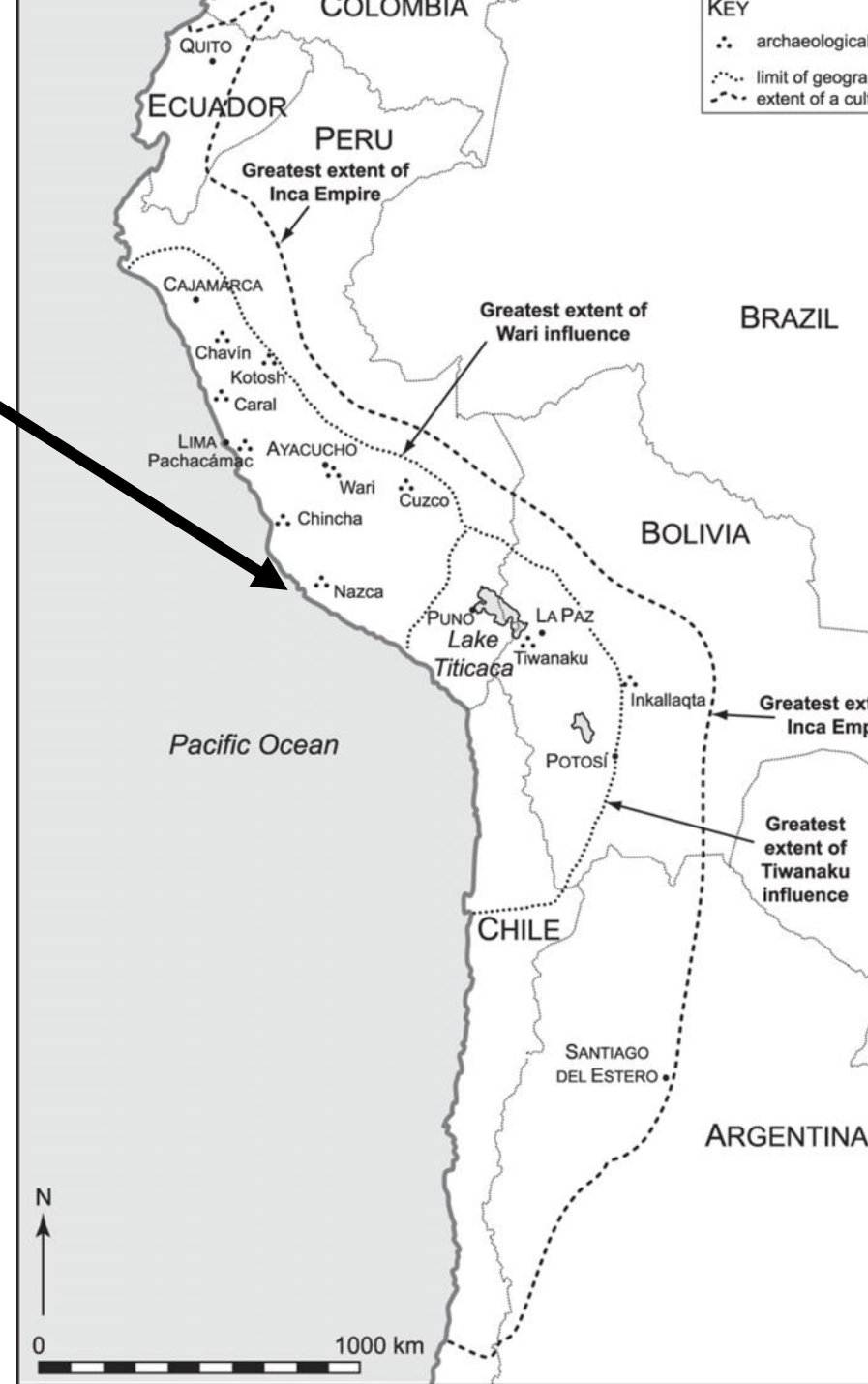
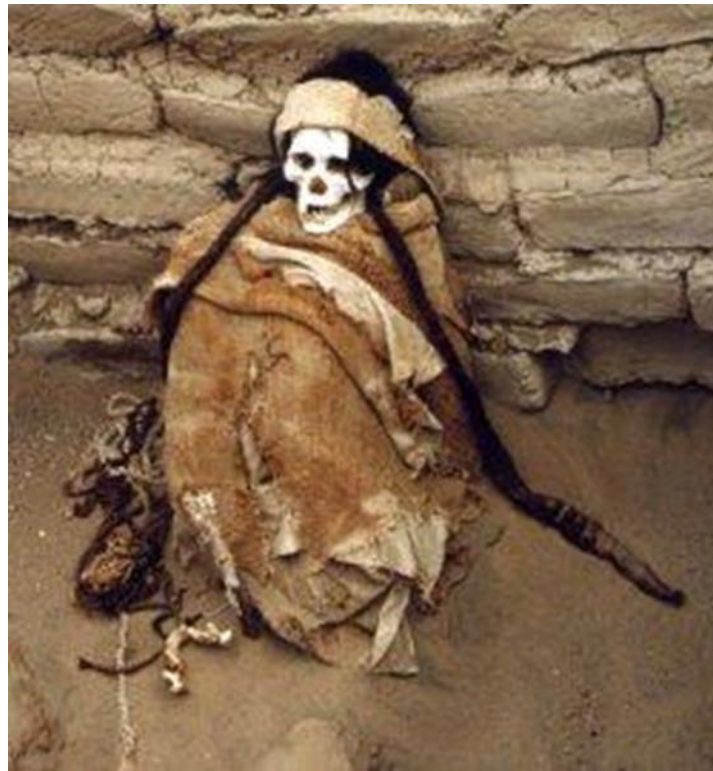


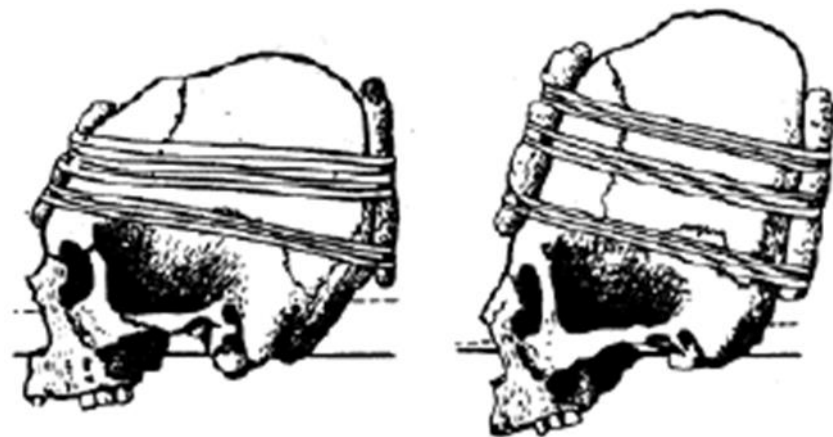
Señor de Sipán





Paracas

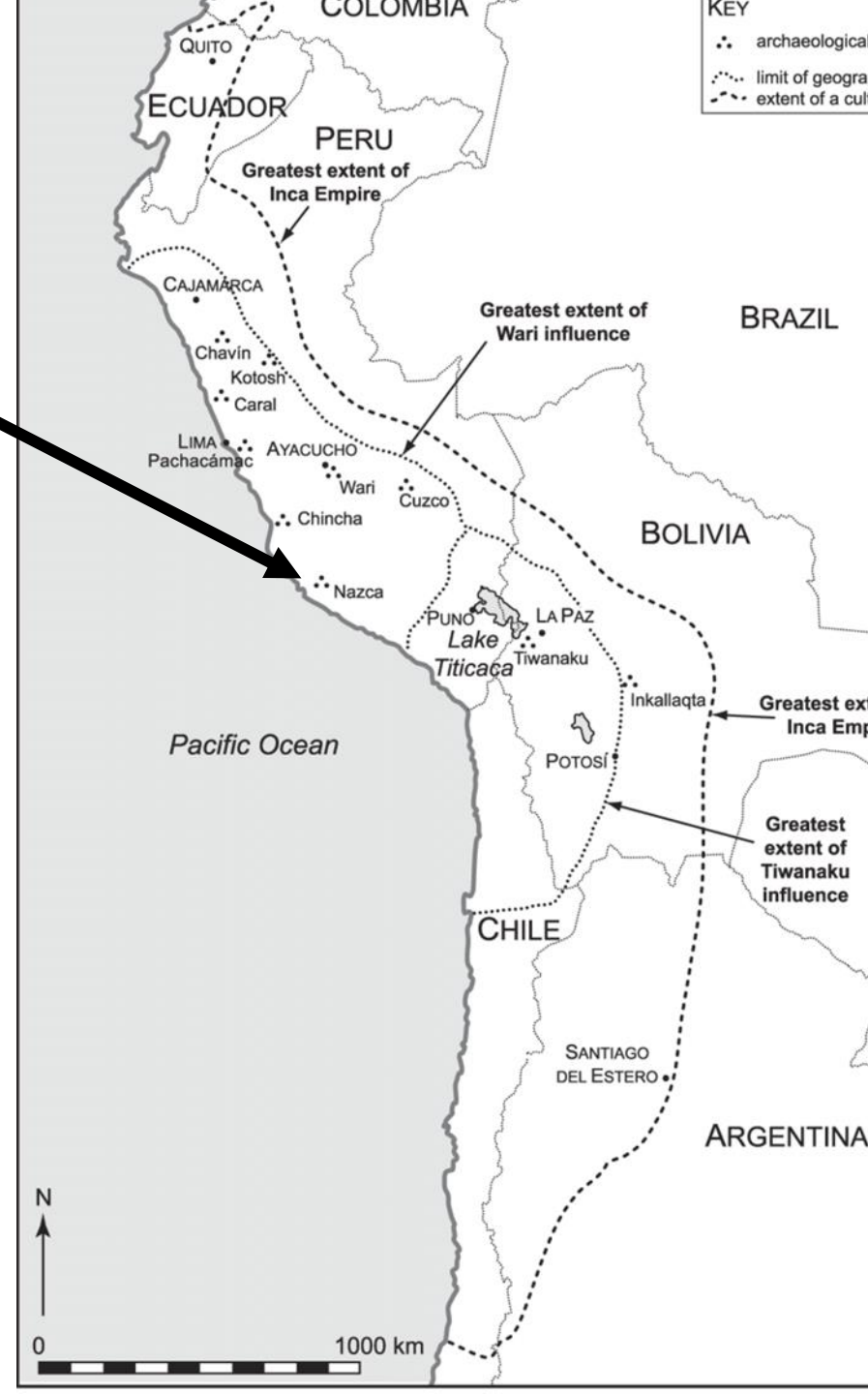






Nazca

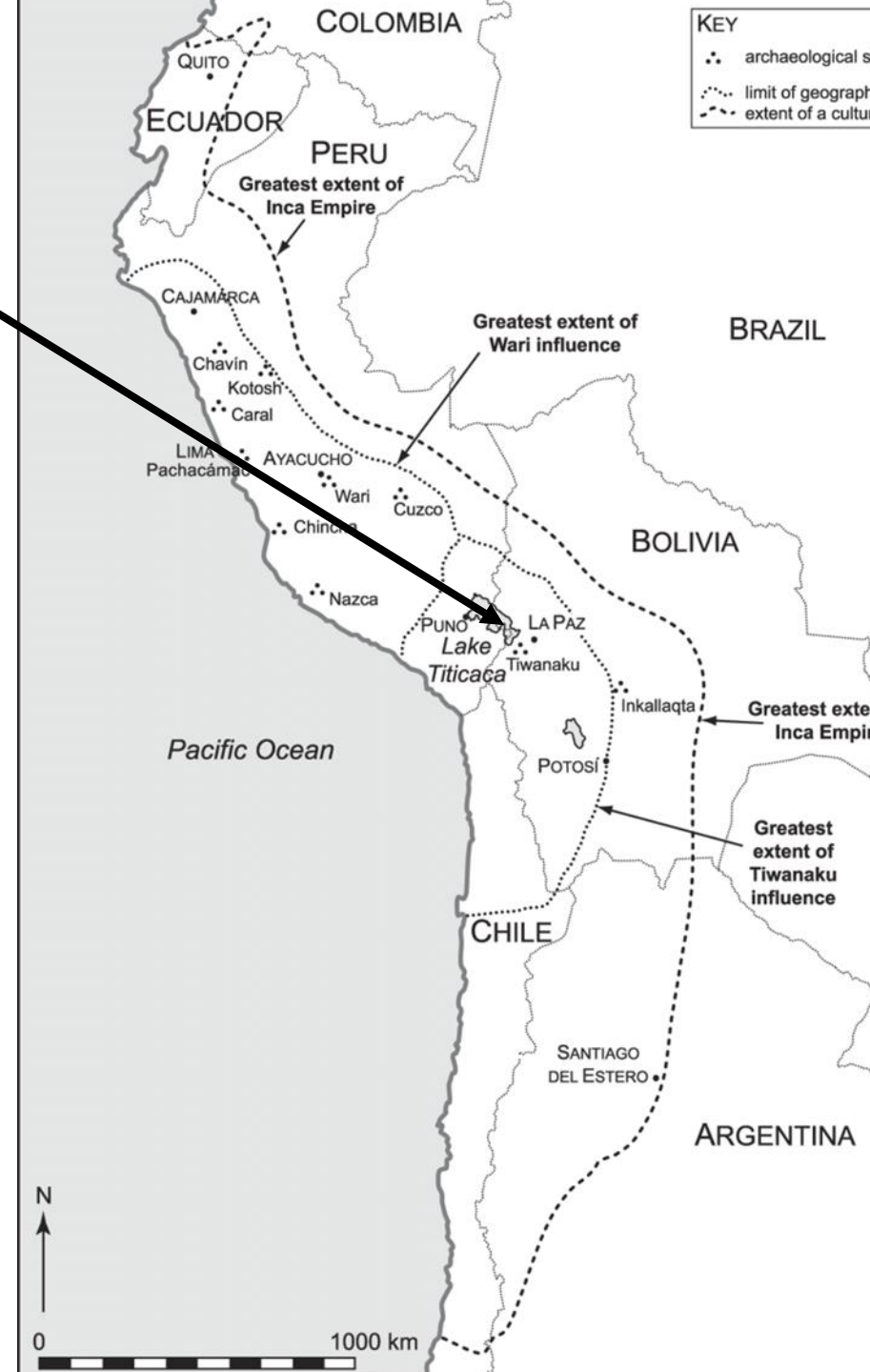
Cahuachi





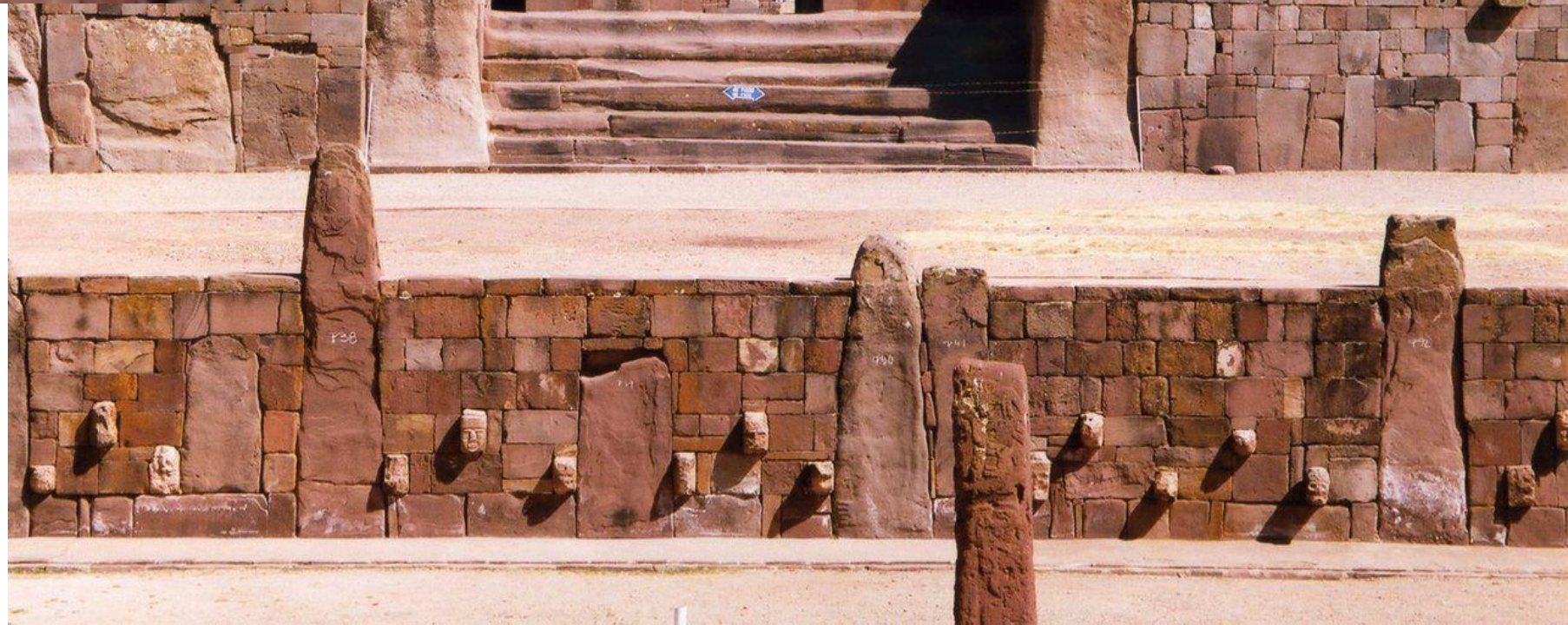


druhý horizont Tiahuanaco (Tiwanaku)













Huari (Wari)







Aymara

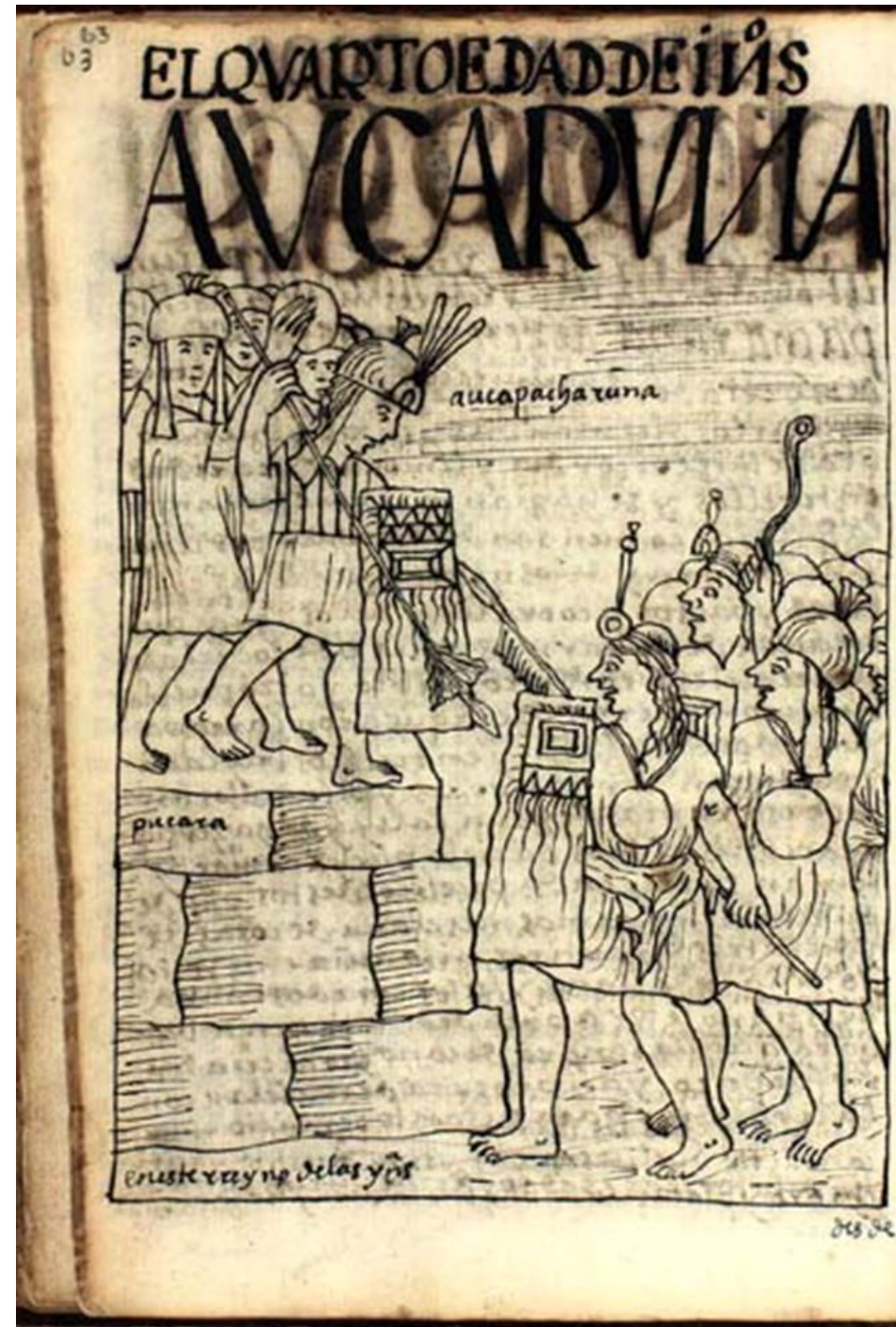


druhé přechodné období (10. – 13. stol.
n.l.)

señoríos (curaca, sinchi)

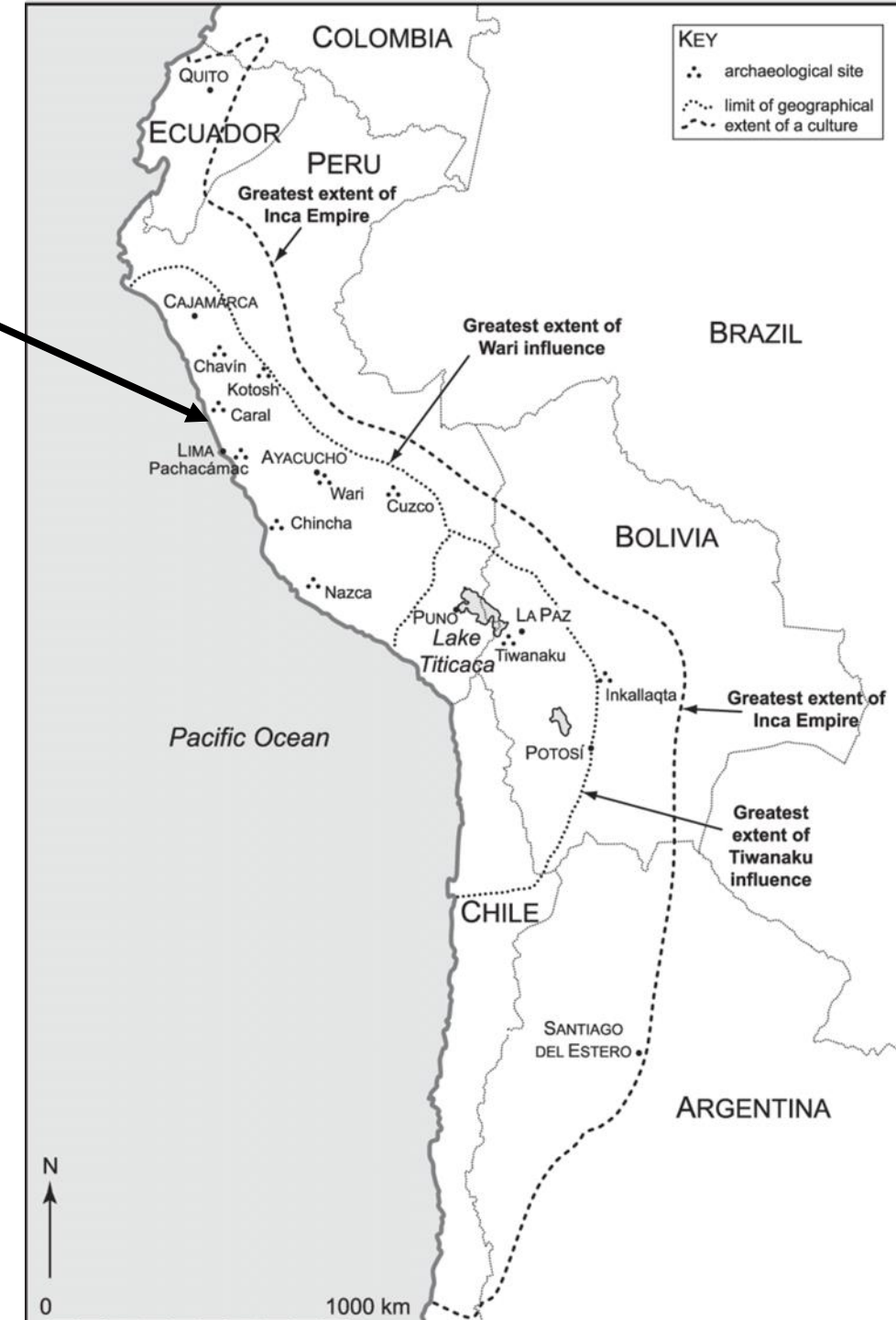
auca runa

Felipe Guaman Poma de Ayala



Chimu (11.-15. stol.)

Chan-Chan



ciudadelas





