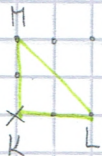
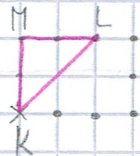


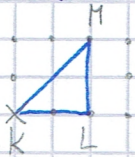
1. a) $\exists L, M$, sest bojevi nesimetričnega $\triangle KLM$ podle šipah, vsake pismena rajid do rajisim, kolik takoryh \triangle existuje? $K \rightarrow \rightarrow \rightarrow \uparrow \uparrow \leftarrow \leftarrow \leftarrow \downarrow \downarrow K$

$K \rightarrow \rightarrow \rightarrow \uparrow \uparrow \leftarrow \leftarrow \leftarrow M \downarrow \downarrow K$

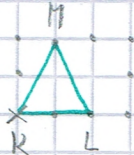


$K \rightarrow \rightarrow L \rightarrow \uparrow \uparrow \leftarrow \leftarrow \leftarrow M \downarrow \downarrow K$

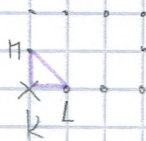
$K \rightarrow \rightarrow L \rightarrow \uparrow \uparrow \leftarrow \leftarrow \leftarrow \downarrow \downarrow K$



$K \rightarrow \rightarrow L \rightarrow \uparrow \uparrow \leftarrow \leftarrow \leftarrow M \leftarrow \downarrow \downarrow K$



$K \rightarrow L \rightarrow \rightarrow \uparrow \uparrow \leftarrow \leftarrow \leftarrow \downarrow M \downarrow K$



Ukaha ma' 5 reseni

$K \rightarrow \rightarrow \rightarrow \uparrow \uparrow \leftarrow \leftarrow \leftarrow M \downarrow \downarrow K$

