

Body, Health and
Society

**BODIES
INCOMENSURABLE AND
MENOPAUSE**

DISCUSSION REVIEW

1. How can material circumstances influence a mother's love towards their children in today's western world ?
2. Is there some kind of grief involved in the death of a child? (for example, some suppressed grief or are the mothers completely detached from their babies in that matter?)
3. Considering the motherhood definition too narrow (using the notion of social determinism argument) – how could it be improved?
4. Would we assume this high child morbidity is a widely accepted phenomenon in the country or if most people just don't want to deal with it?

Organization of
assignments

```
graph TD; A[Organization of assignments] --> B[Margaret Lock]; B --> C[Reading reflections]; C --> D[Discussion];
```

Margaret Lock

Reading reflections

Discussion

OUTLINE

ORGANIZATION

- synopses
- Anyone who has not submitted the topic and bibliography of the final essay?
 - no minus points, but feedback delay
 - ideally list: title, how you will approach it; bibliography
- **REMEMBER:**
 - you need to base it on at least **3 titles from the field of social sciences** (at least one from the course mandatory literature)
 - all of the sources (for the topic analysis) needs to be: A) anthropological; B) sociological
 - **literature from other fields and personal experience is acceptable in limited extend – and could serve only as an example = application of the theory**
 - How do you understand it?

MARGARET LOCK

[HTTPS://EN.WIKIPEDIA.ORG/WIKI/MARGARET_LOCK](https://en.wikipedia.org/wiki/Margaret_Lock)



- * 1936
- Canadian anthropologist of a British origin
- McGill University (Canada)
- body, embodiment, comparative epistemologies of medical knowledge and practices, global implication of biomedical technologies developments
- „...all medical knowledge, including that of biomedicine, is embedded in specific historical, social, cultural, political, and economic contexts ...“
- with Ngyuen: *An Anthropology of Biomedicine* (2010)
- with Farquhar: *Beyond the Body Proper* (2007)
- *Encounters with Aging: Mythologies of Menopause in Japan and North America* (1993)

LOCK: ON THE MENOPAUSE

- How was the texts for reading?

Situating the reading

- genre
 - time
 - space
 - field
 - methodology
- What is the text about? (where to search for it?)
 - Summary vs. Story
 - What is the main argument? (where to search for it?)
 - Questions (smth. not clear)/ Comments (smth. not agreed with?)
 - √
 - +
 - -
 - ?



<https://dawaai.pk/blog/menopause-whats-happening-to-your-body-and-what-you-can-do-about/>

UNDERSTANDING THE TEXTS:

LOCK, M., KAUFERT, P. (2001). MENOPAUSE, LOCAL BIOLOGIES, AND CULTURES OF AGING. *AMERICAN JOURNAL OF HUMAN BIOLOGY*, 13(4), 494.

LOCK, M., NGUYEN, V. K. (2010). AN ANTHROPOLOGY OF BIOMEDICINE OXFORD. **THE END OF MENSTRUATION: 84-89.**

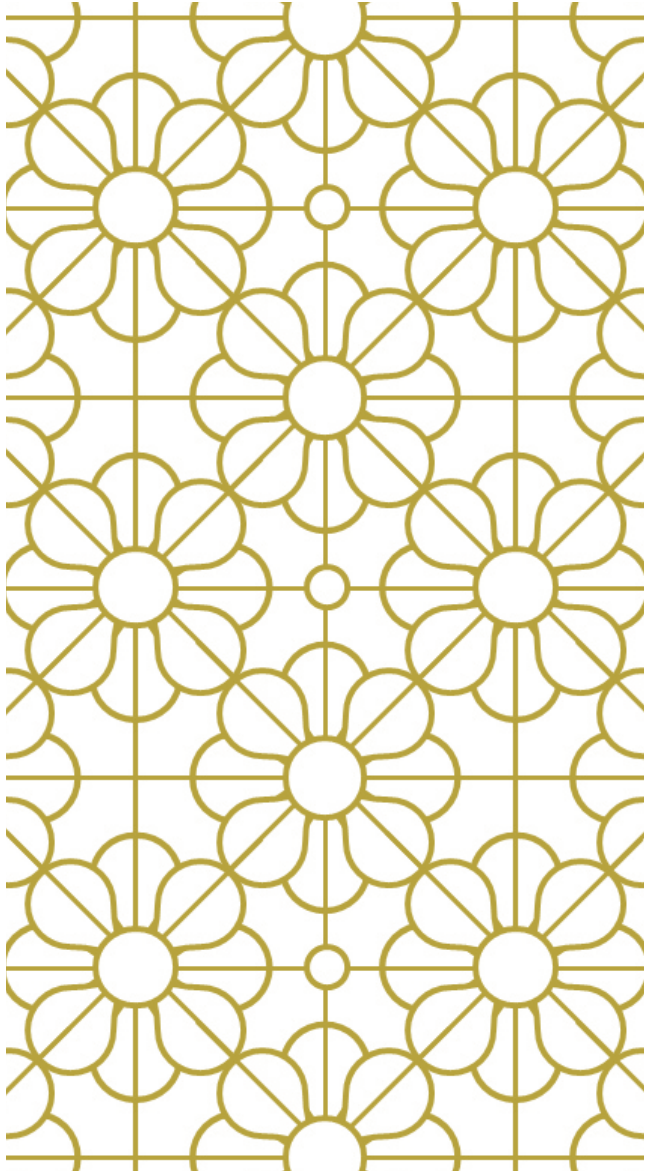
- What is menopause?
 - when and how did the concept emerge?
 - how is it defined by medical discourse?
 - how it is experienced by people?
- What is *kônenki*?
 - how is the concept defined? (etymologically, experientially)
 - how medicalization of the transformation labeled as menopause happened?
 - what has it changed in Japanese society?

TABLE 1. Comparison of the rates of core symptom reporting by study^a

Symptom	Study			(2 df)
	Japan	Canada	USA	
Diarrhea/constipation	24.5	12.8	21.4	62.8*
Persistent cough	4.2	5.2	10.1	68.4*
Upset stomach	6.3	12.9	16.1	85.1*
Shortness of breath	3.1	8.2	15.6	177.6*
Sore throat	10.5	9.1	10.7	2.9
Backaches	24.2	26.8	29.6	17.7*
Headaches	27.5	33.8	37.2	45.2*
Aches/stiffness in joints	14.5	31.4	38.6	279.1*
Dizzy spells	7.1	12.3	11.1	21.4*
Lack of energy	6.0	39.8	38.1	503.3*
Irritability	11.5	17.1	29.9	246.6*
Feeling blue/depressed	10.3	23.4	35.9	365.1*
Trouble sleeping	11.7	30.4	30.6	189.8*
Lack of appetite	4.6	4.0	5.4	5.8
Hot flushes	12.3	31.0	34.8	246.6*
Cold or night sweats	3.8	19.8	11.4	158.2*
Hot flushes/sweats (combd)	14.7	36.1	38.0	252.5*
Total (100%)	1,225	1,307	7,802	

^aFrom Avis et al. (1993).

*Indicates $P < 0.01$.



.....COMPARE.....

- biomedical assumption of universal body
- and
- local biologies
-
- How would you approach nature-culture relation within each body ontology?

LOCAL BIOLOGIES

DISCUSSION: CONNECTING TO OTHER READINGS

- Relate the paper to the Mauss' (body techniques), Douglas' (social b.), Bourdieu's (habitus), Foucault's (self-regulation), Murphy's/ Merleau-Ponty's and Martin's (gender politics) approach to the body.
- i.e. apply the theory on the example analyzed by Lock – how the menopause could be approached in the light of these concepts?

QUESTIONS?

- Considering assignment?
 - Essay topics + bibliographies examples
- FAQ:
 - You can miss 4 classes without an apology and confirmation, that it was for a serious reason (illness)
 - The essay is due 6th June, but sooner you will submit, the more time you will have for its corrections
 - 1250 - 1750 words (60 % of the final grade)
 - Essay design:
 - based on at least 3 titles from the field of social sciences (at least one from the course mandatory literature)
 - building upon literature - to discuss a selected topic, comparing different theoretical approaches to it (apply a theory/ concept on some phenomenon). The arguments has to be rooted in literature!!!!

THANK YOU FOR THE PARTICIPATION IN OUR MODULE!

- Questions?
- Suggestions?

