






Význam těžiště: stabilita

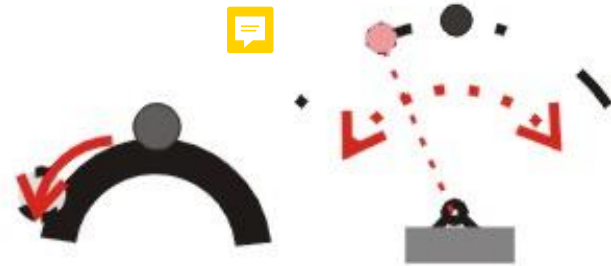
- Schopnost systému při působení podnětu ustálit se v rovnovážném stavu 

- Z pohledu mechaniky:
 - Statická 
 - Dynamická 

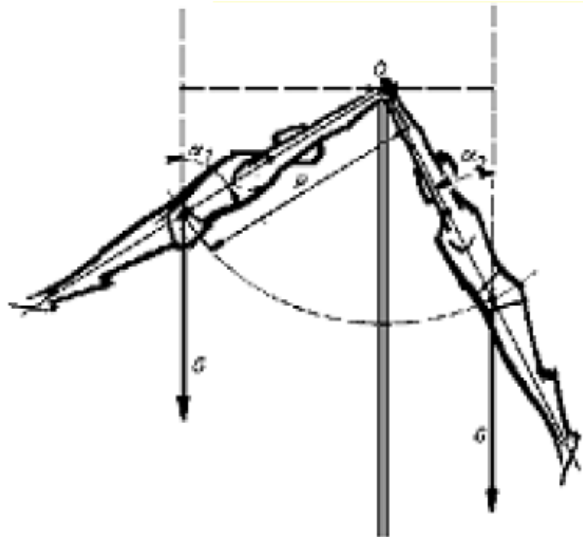
Stabilní vs. labilní poloha



stabilní

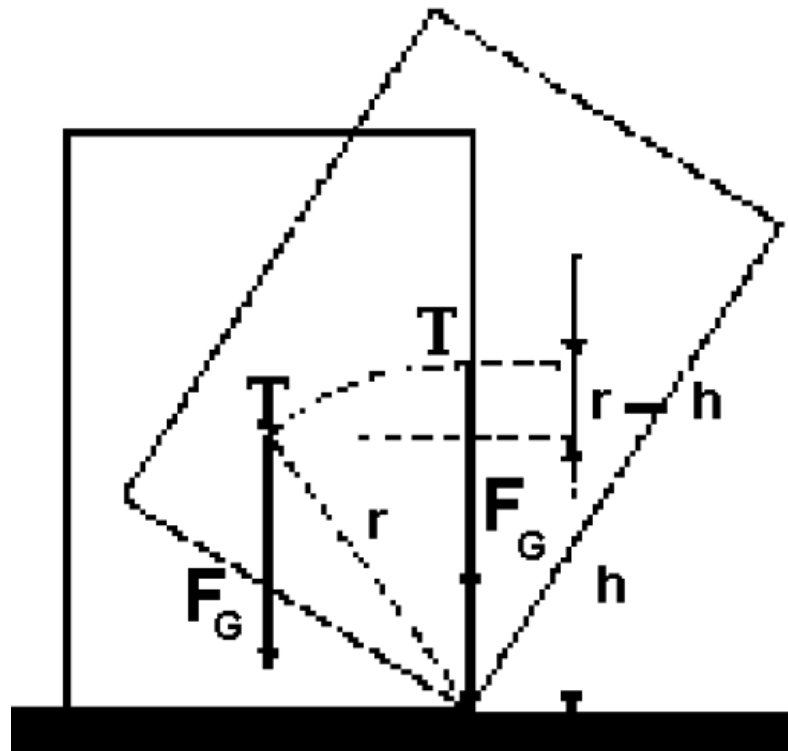


labilní

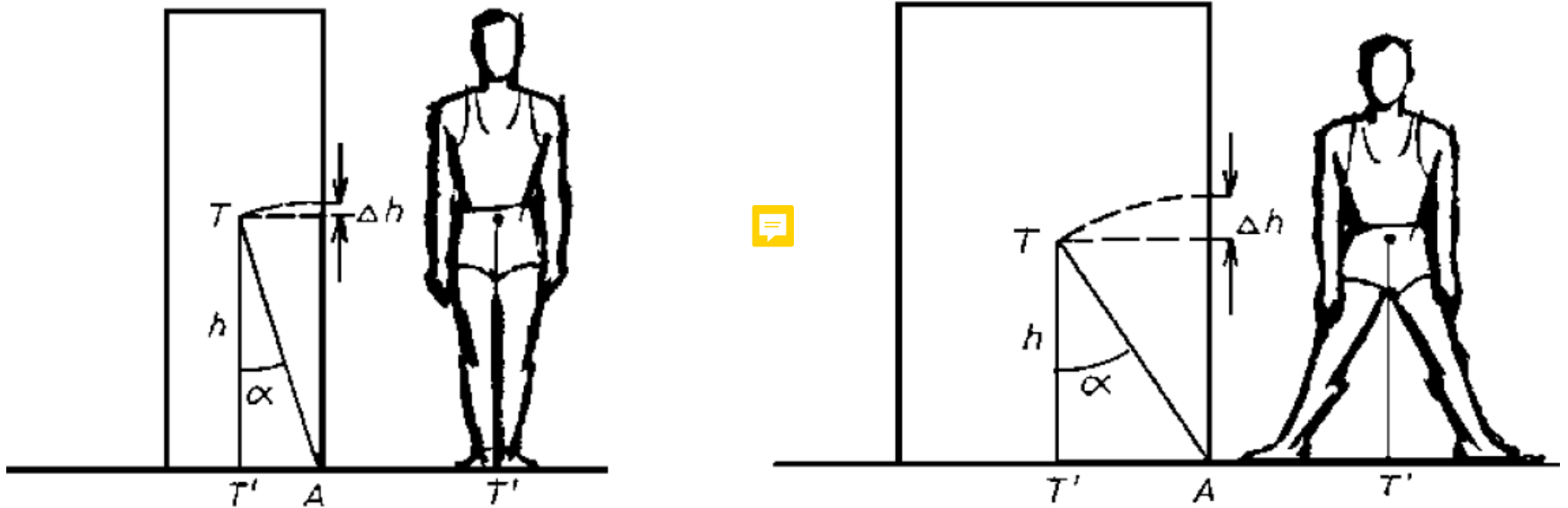


Míra stability

- Práce potřebná k vychýlení z rovnovážné polohy (na mez stability)



Ovlivnění stability

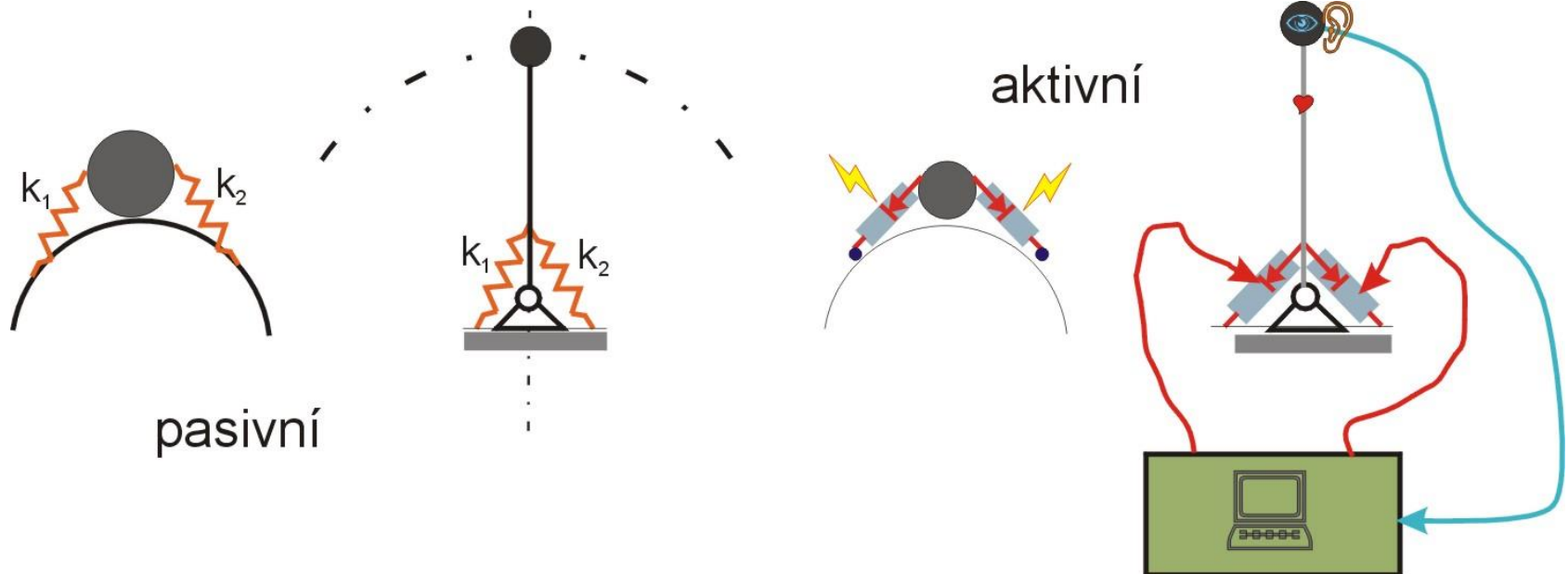


- Opěrná báze

Dynamická stabilita - stabilizace

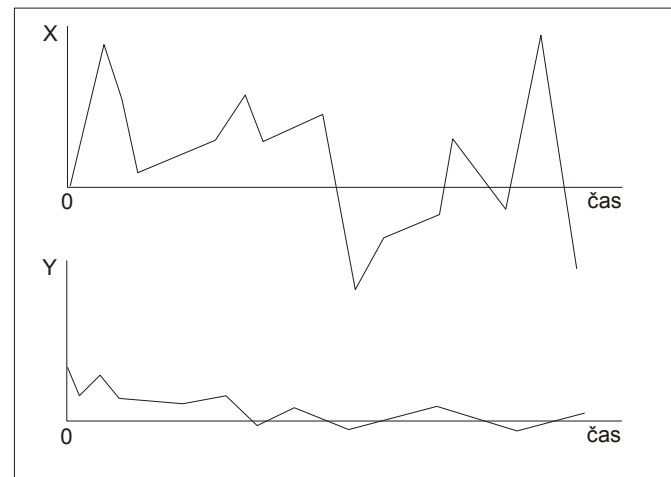
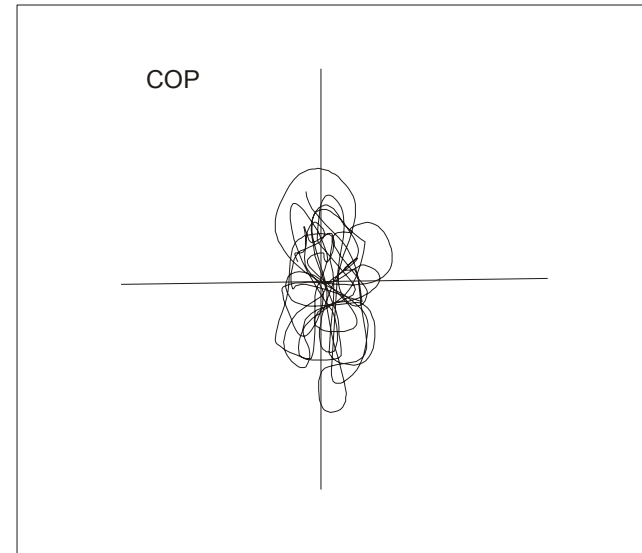
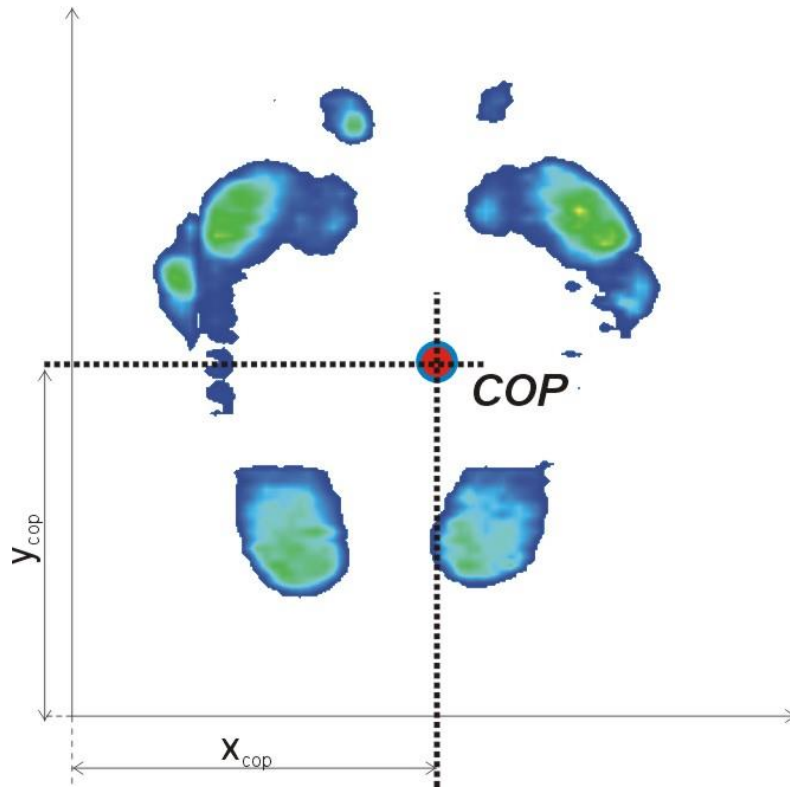


- Proces: neustálá oscilace kolem rovnovážné polohy



- Agonista vs. antagonist

Stabilometrie



□ COG vs. COP