



FACULTY OF SOCIAL SCIENCES  
*Charles University in Prague*

# The Israeli-Palestinian Conflict

Settlements

May 5, 2020

# Outline

- Paper Proposals
- Origins of the settlement project
- Current situation
- Different types of settlements
- Impact on the Palestinians

# Final Paper Proposals

- Too descriptive
- Too broad
- Too many research questions
- No need for factual background
- Hard to come to convincing predictions
- Your own analysis
  
- Technicalities
  - Do not refer to Jstor etc.

# Settlements

- Why are the settlements such a contentious issue?

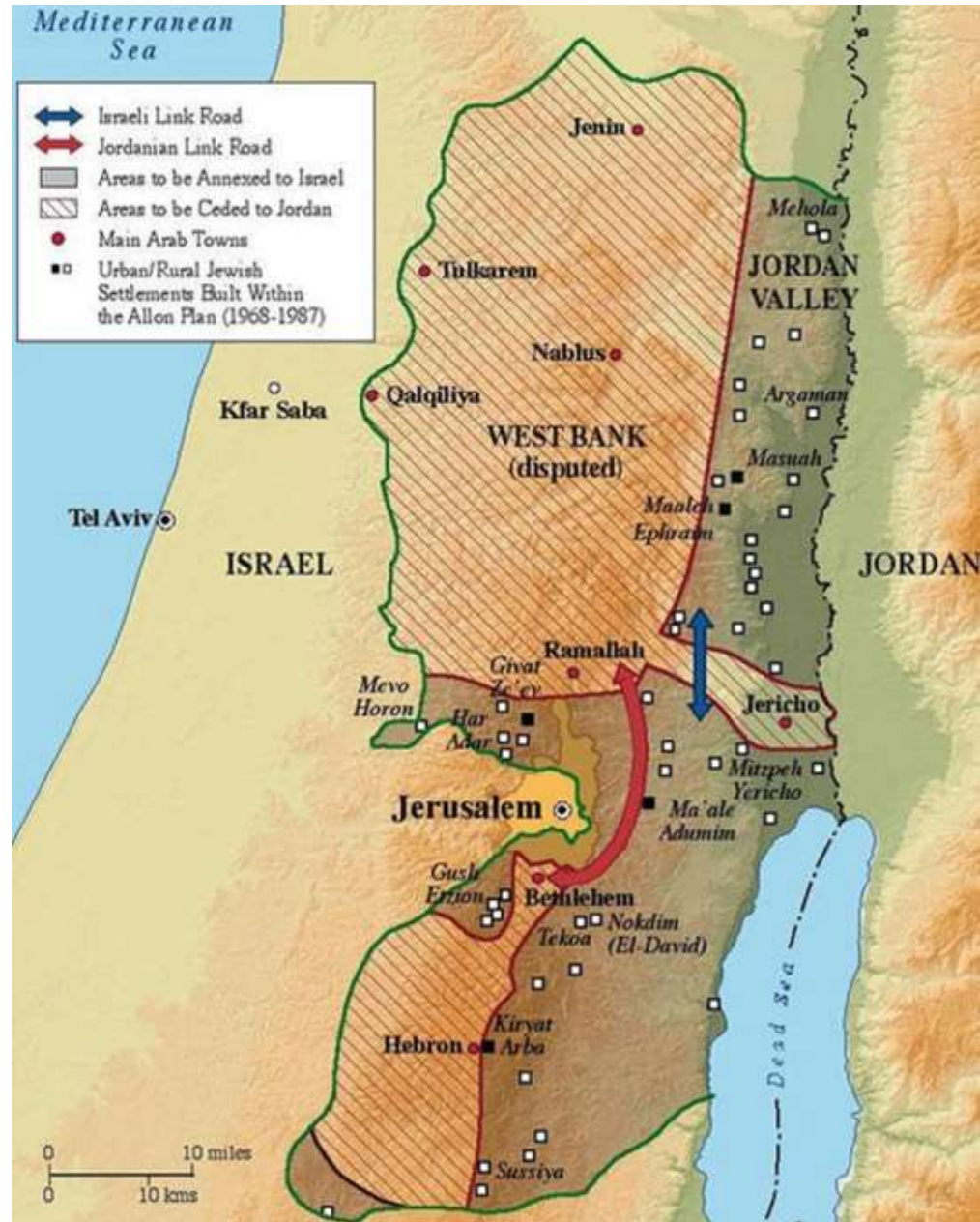
# Group discussion

- What are arguments in favor of the settlements' existence?

# Settlements: Origins

# Biblical history





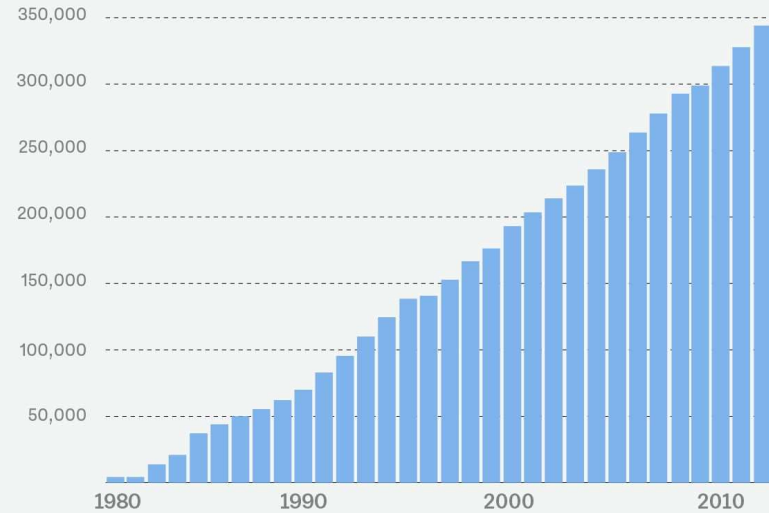




Developments since the 1980s

## Settler population in the West Bank

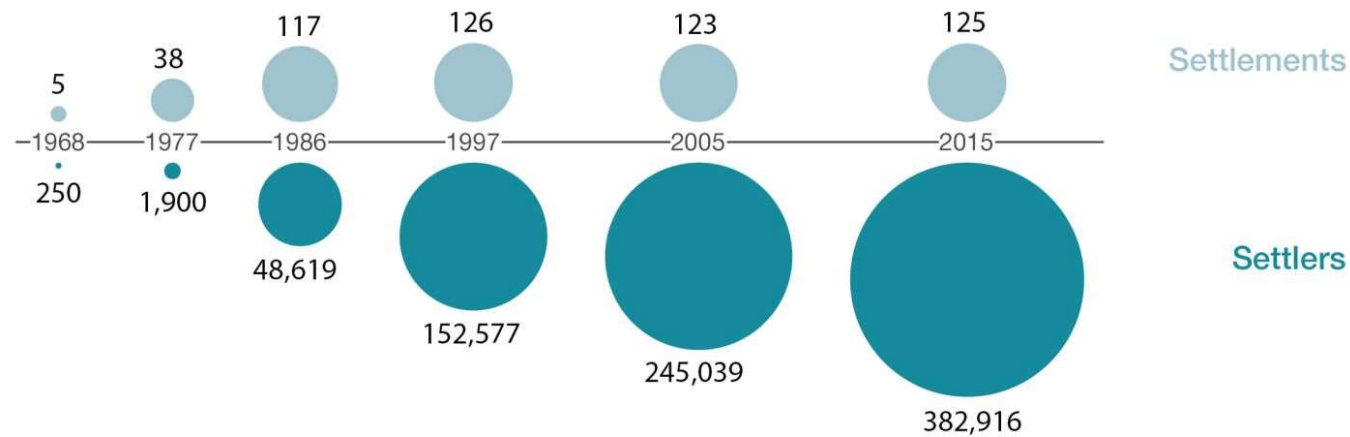
(excluding East Jerusalem)



SOURCE: IDMC, Americans for Peace Now, based on data from Israel's Central Bureau of Statistics

Vox

## Number of Jewish settlers and settlements in West Bank



# Three US presidents and Israeli settlements

Israel-US relations have hit an all-time low under Barack Obama and Benjamin Netanyahu many observers say. But **on settlements** - the most contentious issue - **little has changed**. Our chart tracks their growth.

Settler population  
(West Bank)

400,000  
350,000  
300,000  
250,000  
200,000  
150,000  
100,000  
50,000  
0

400,000 settlers now live in the West Bank.

International Court of Justice declares East Jerusalem settlements illegal.

US vetoes UN draft resolution condemning settlements.



Bill Clinton



George W. Bush



Barack Obama

1993 1995 1997 1999 2001 2003 2005 2007 2009 2011 2013 2015



Yitzhak Rabin



Shimon Peres



Benjamin Netanyahu



Ehud Barak



Ariel Sharon



Ehud Olmert

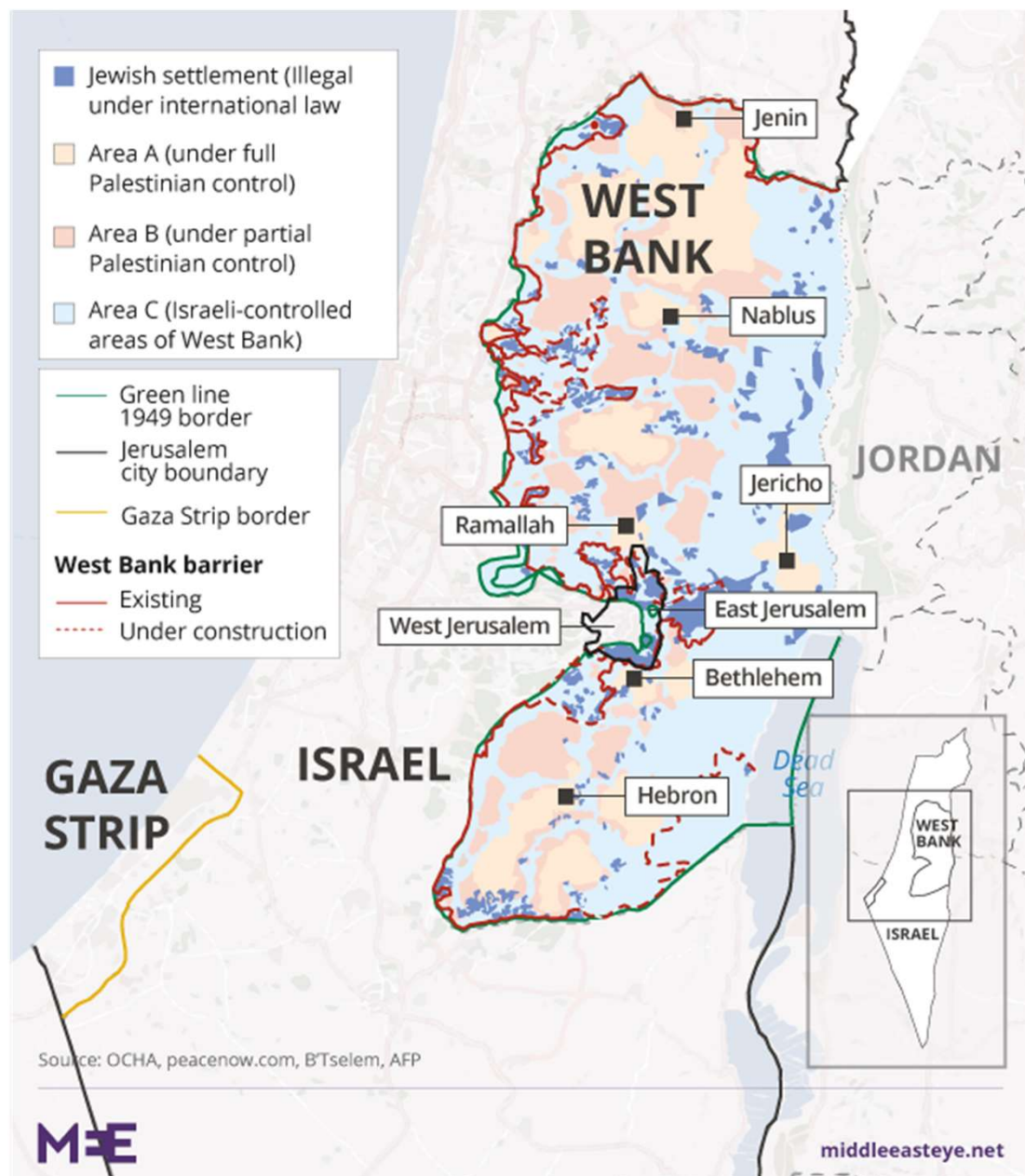


Benjamin Netanyahu

Sources: B'tselem, Peace Now







# Trump's Plan



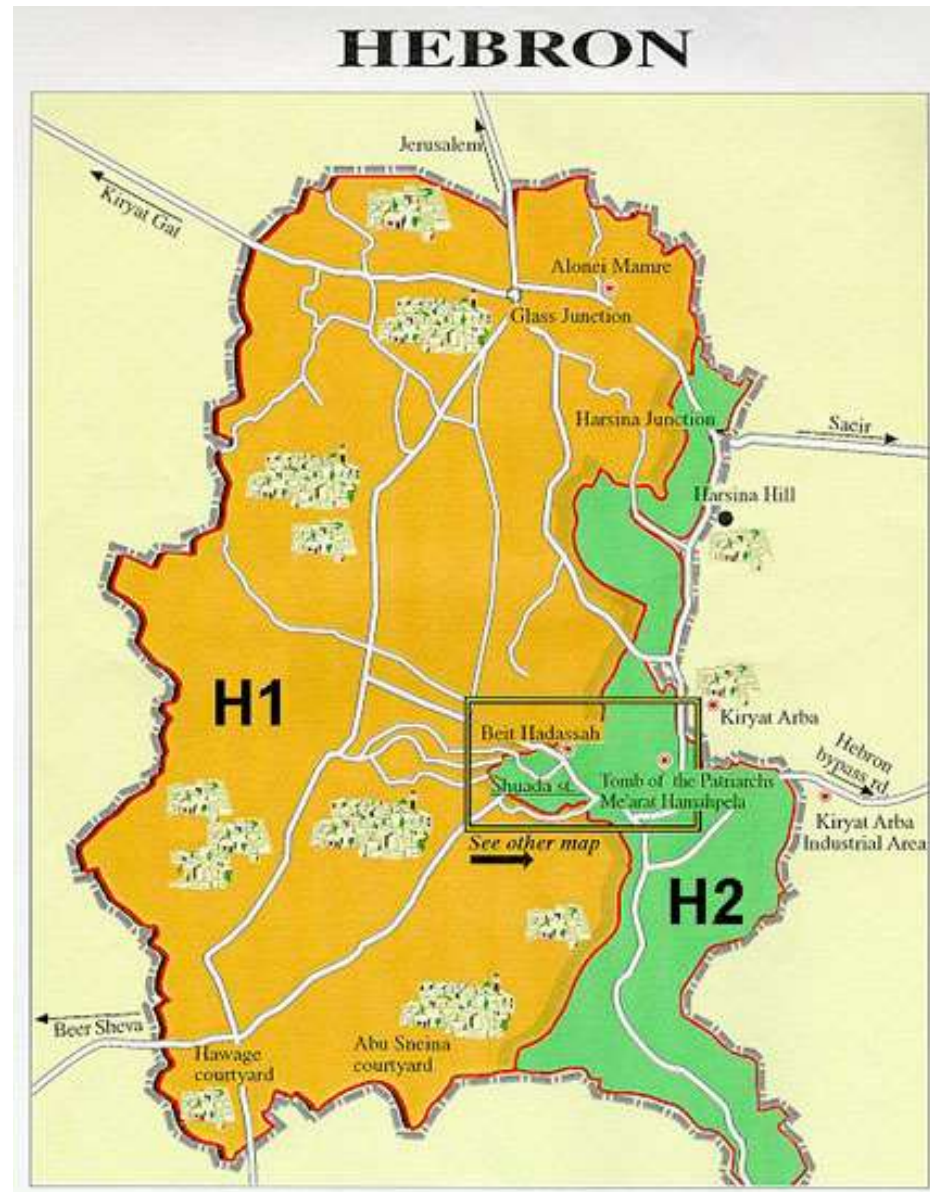


**Israeli Government**

**Global Pandemic**

**Is this an opportunity to illegally annex the West Bank**

# Hebron





- Why is Hebron one of the major contentious sites in the West Bank?





מבנים אלו נבנו על אדמה שנקנתה  
ע"י הקהילה היהודית בחברון בתקופת (1807)  
**ונגזלה ע"י הערבים**  
אחר שריצחו 67 יהודי חברון בחודש ט' (1929)  
אנו דורשים צדקה! השיבו לנו את רכושנו הגזול!  
השוב היהודי בחברון

THESE BUILDINGS WERE CONSTRUCTED ON LAND  
PURCHASED BY THE HEBRON JEWISH COMMUNITY IN 1807.  
**THIS LAND WAS STOLEN BY ARABS**  
FOLLOWING THE MURDER OF 67 HEBRON JEWS IN 1929.  
WE DEMAND JUSTICE! RETURN OUR PROPERTY TO US!  
THE JEWISH COMMUNITY OF HEBRON

אירוח חברון  
Hebron Hospitality  
052-5692872  
eladpaas@gmail.com







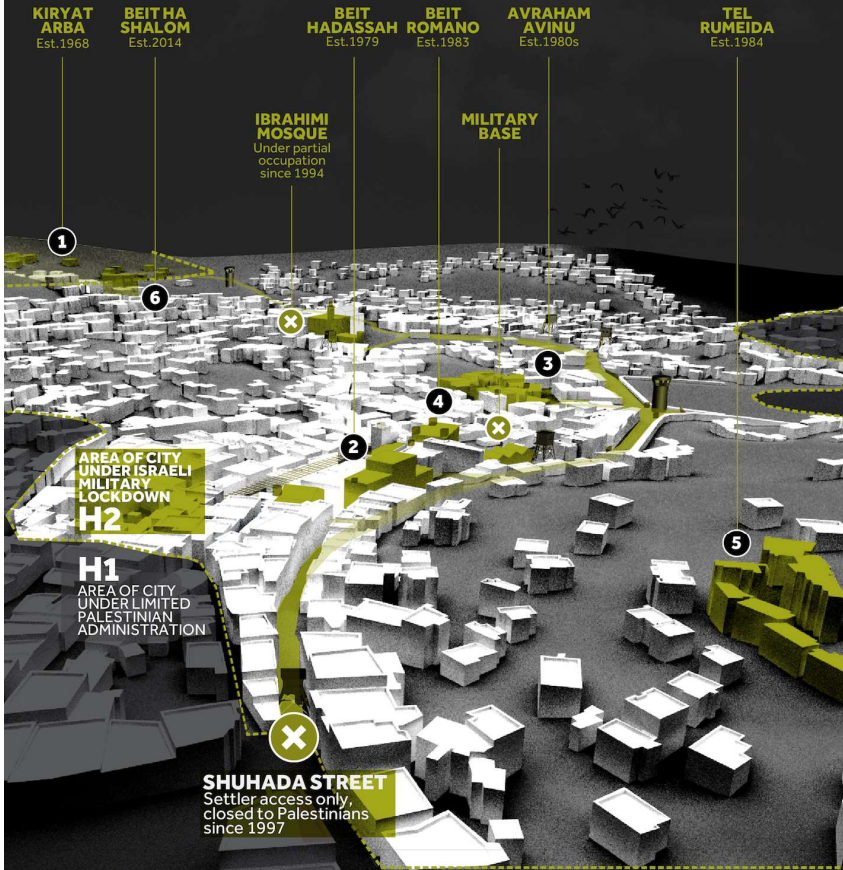
# HERITAGE UNDER THREAT

ISRAEL'S TAKEOVER & SEGREGATION OF HEBRON'S OLD CITY

◆ Settlers only # Settlement ✕ Closure 🚧 Checkpoint 🏠 Watchtower 🏢 Other military

The Palestinian old city of Hebron is recognised as a UNESCO World Heritage site, yet it has been under Israeli military lockdown since 1997. The daily lives of its 215,452 Palestinian inhabitants are severely disrupted to privilege just 850 Israeli settlers.

A system of military installations and checkpoints curtail Palestinian movement so that Israeli settlers can move freely between the 6 illegal settlements in the city. Shuhada Street, once Hebron's main commercial artery, is entirely closed to Palestinians.



Hebron, the West Bank's largest city and traditional commercial center, has been on an Israeli military lockdown since 1997. Israel's policy of segregation in the city severely disrupts the daily lives of its 150,000 Palestinian inhabitants. An estimated 2000 Israeli soldiers work to provide privileged status to 850 illegal Israeli settlers living in the city center.

1997 DENIED ACCESS: ALL PALESTINIANS ACCESS CONTINUES: ISRAELI SETTLERS

2000-2006 50% DECLINE IN ATTENDANCE AT 3 CLOSEST SCHOOLS

2007 304 PALESTINIAN SHOPS AND WAREHOUSES CLOSED

By 2007 40% OF HOMES FORCIBLY EMPTIED





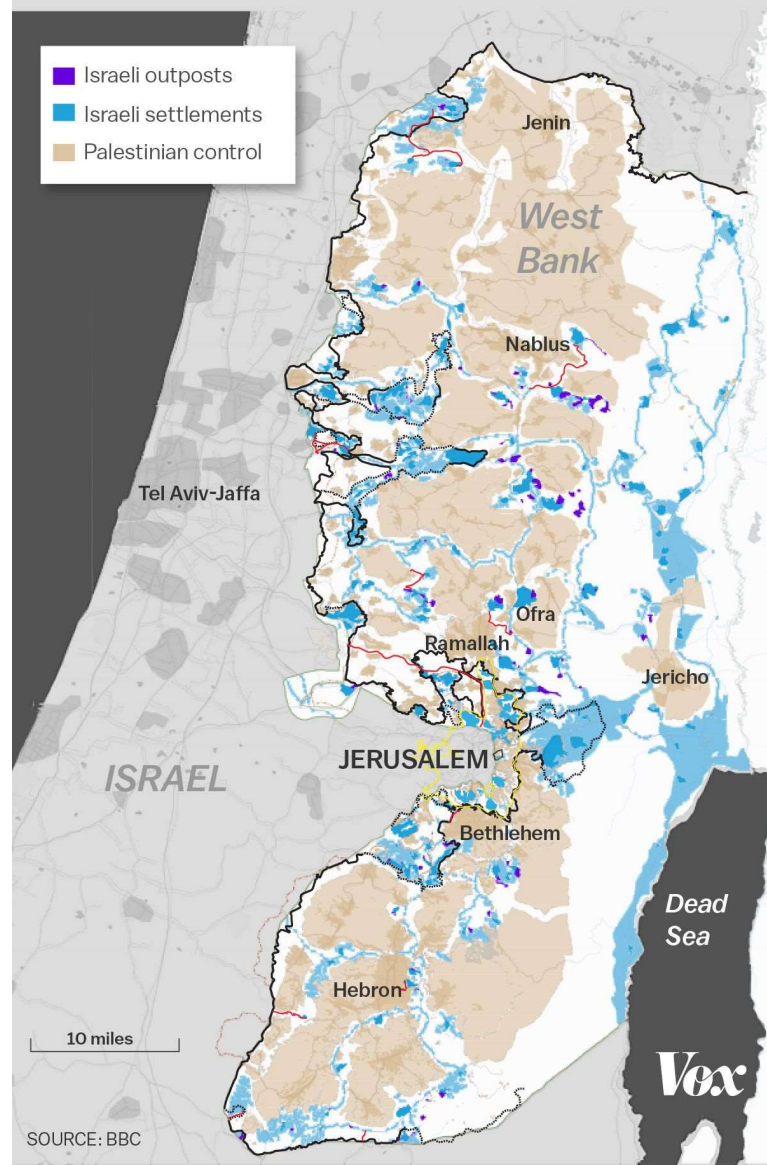




# Outposts



## Locations of Israeli settlements and outposts

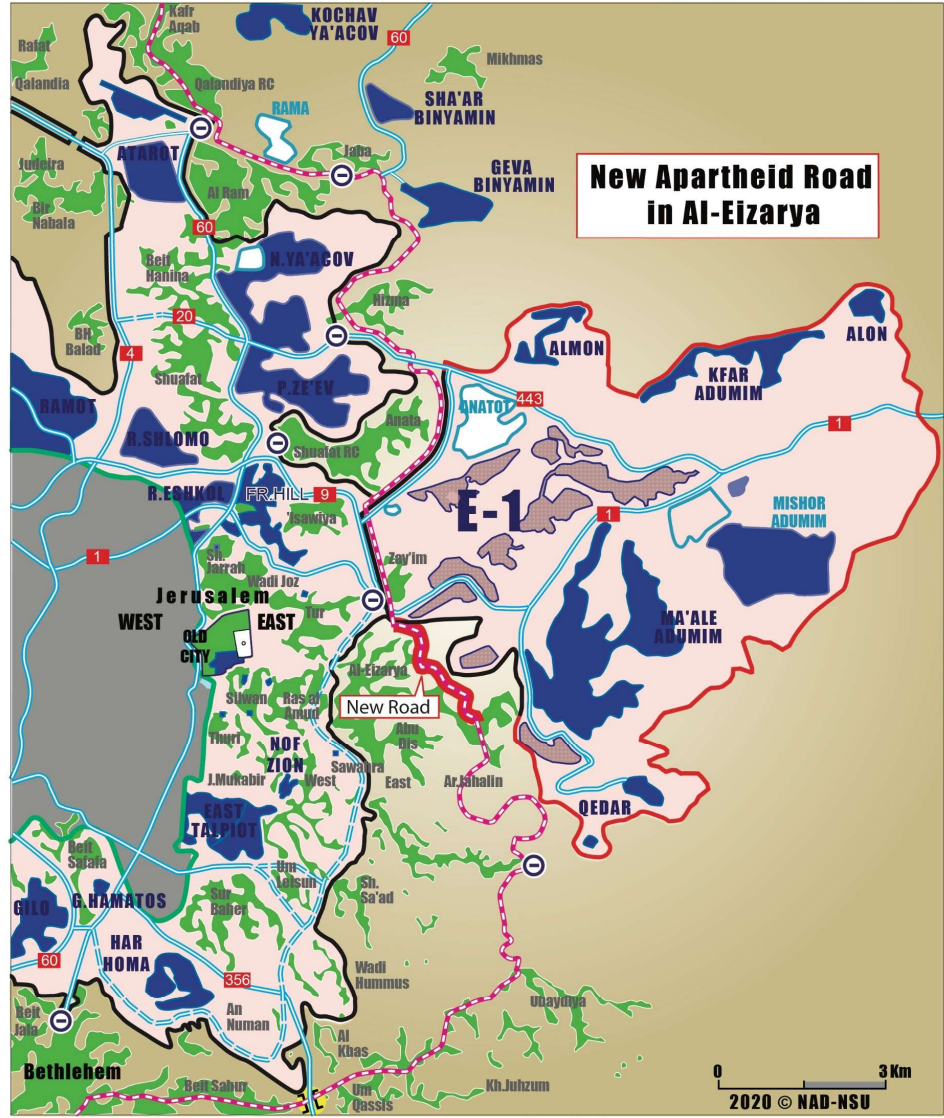




Jerusalem



## New Apartheid Road in Al-Eizarya



- 1967 Boundary ("Green Line")
- Palestinian territory west / east of the Wall
- Israeli settler / bypass road - existing
- planned / under const.
- Israeli military base
- Planned settlement areas inside E-1
- Israeli checkpoint
- Israeli settlement built-up area
- The Wall - constructed/under const.
- approved or planned
- Israeli-proposed "alternate" road link for Palestinians

2020 © NAD-NSU

# Quality of Life Settlements

- <https://www.youtube.com/watch?v=tWmXia3oldo>
- Why are (some) settlements attractive for non-ideological Israelis?
- What does Newman mean by “the banality of colonization”?











# Group discussion

- What are some of the ways in which the settlements have negative impact on the Palestinians' lives?



# Settlers' violence

“United Nations Office for the Coordination of Humanitarian Affairs (OCHA) figures state that the annual rate of settler attacks (2,100 attacks in 8 years) has almost quadrupled between 2006 and 2014.”

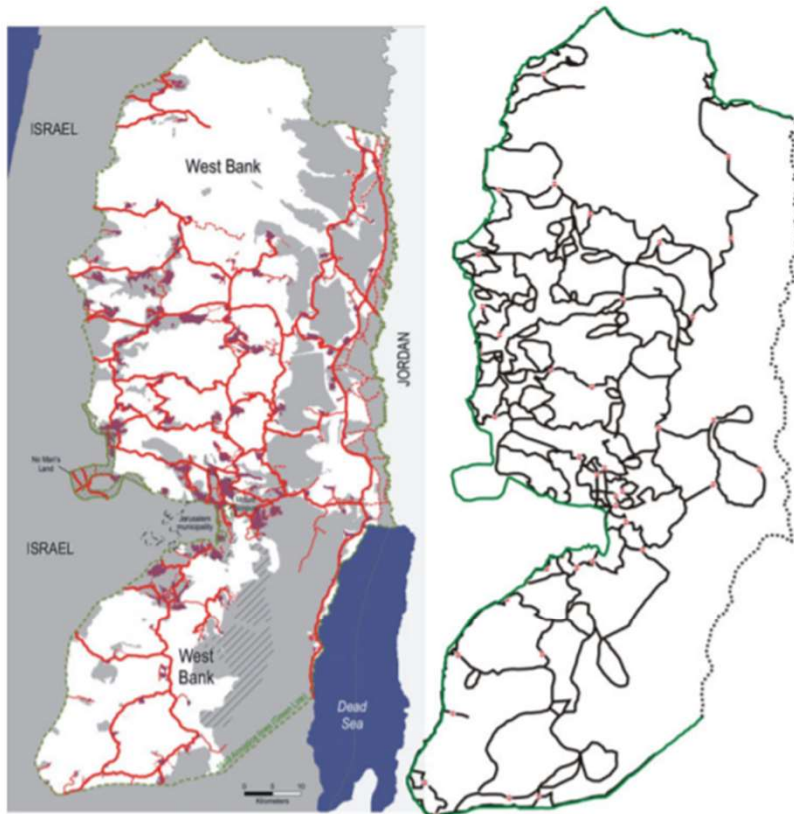
<https://www.haaretz.com/vandals-set-palestinian-mosque-on-fire-1.5311330>

“In a ten-year review published in May 2015, human rights organization Yesh Din found that some 85% of investigations into such cases (including violence, arson, damage to property, mutilation of trees and takeover of land) ended with no further action taken, and that the odds of a police complaint filed by a Palestinian resulting in the conviction of an Israeli civilian were a mere 1.9%. ”

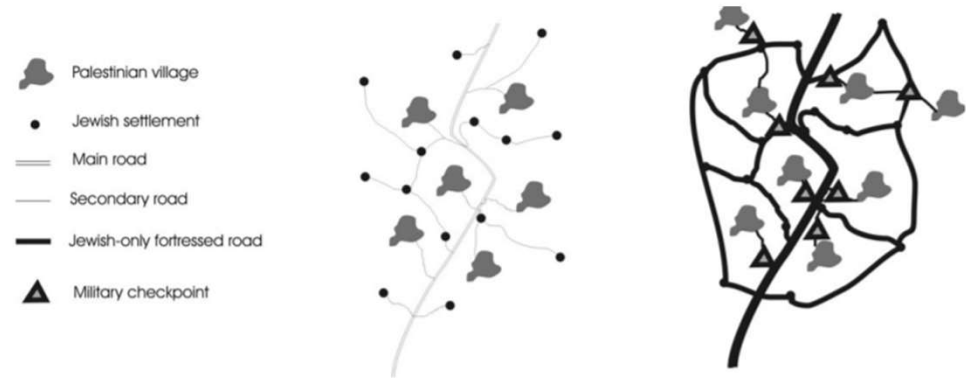
[https://www.btselem.org/settler\\_violence](https://www.btselem.org/settler_violence)

# Impact on the Palestinians

- Planning and development
- Military system – settlers and Palestinians judged differently (the case of kids – 12-year vs 16-year old)
- Around 30 thousand Palestinians work in the settlements



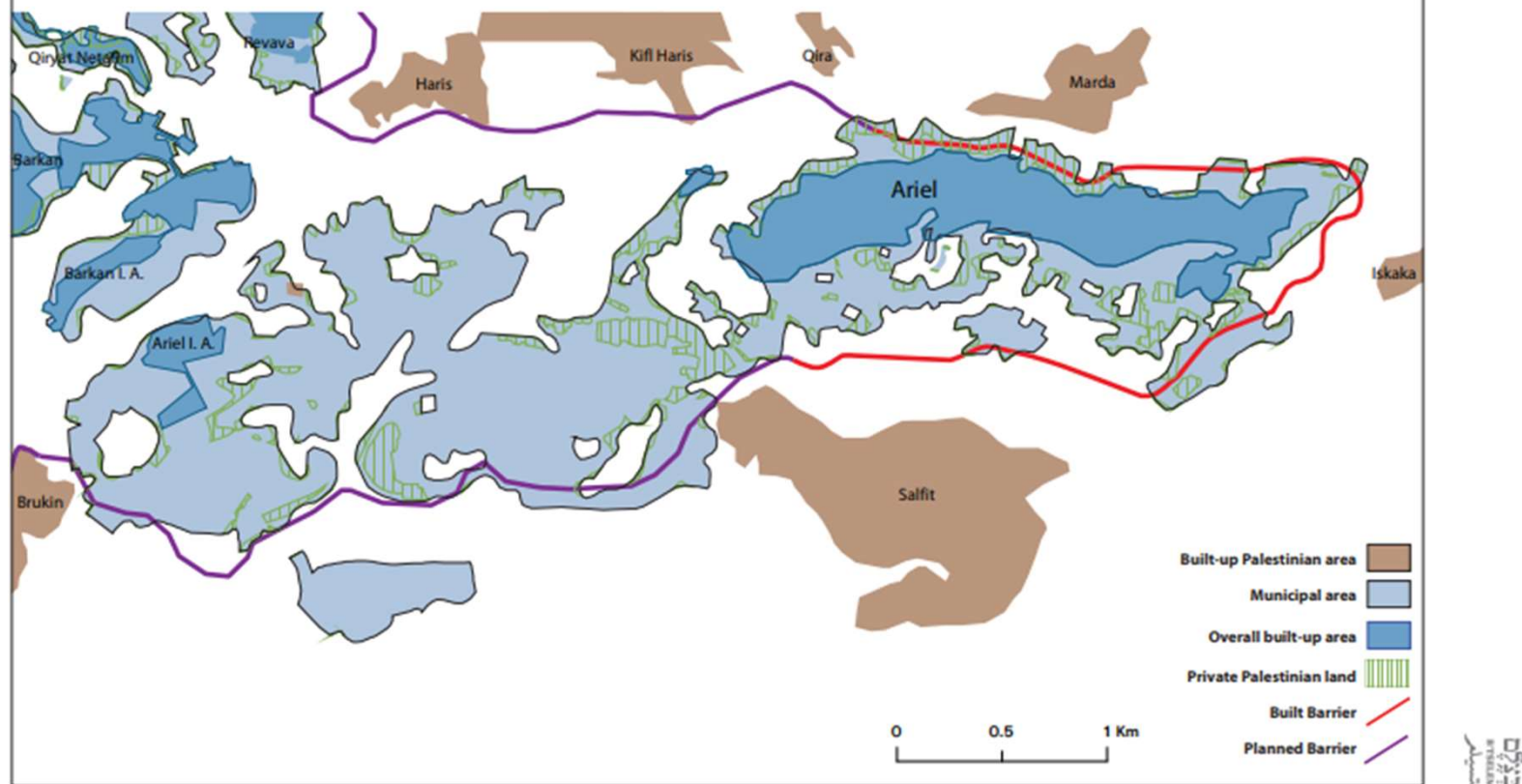
**Figure 2** Left: Map of Israeli-only roads, 2007. Right: Map of Palestinian 'land cells' as created by the closures regime  
*Sources:* Left: OCHA and right: Handel (2009)



**Figure 3** The gated/gating web. Left: Situation before the fortressing of the web – Palestinian villages and Jewish settlements share the same road network. Right: Paving bypass roads and fortressing of the Jewish nodes and corridors creates a gated/gating web cutting off Palestinian villages

<https://rgs-ibg.onlinelibrary.wiley.com/doi/pdf/10.1111/tran.12045>

## Private Palestinian land in the built-up and municipal area of Ariel



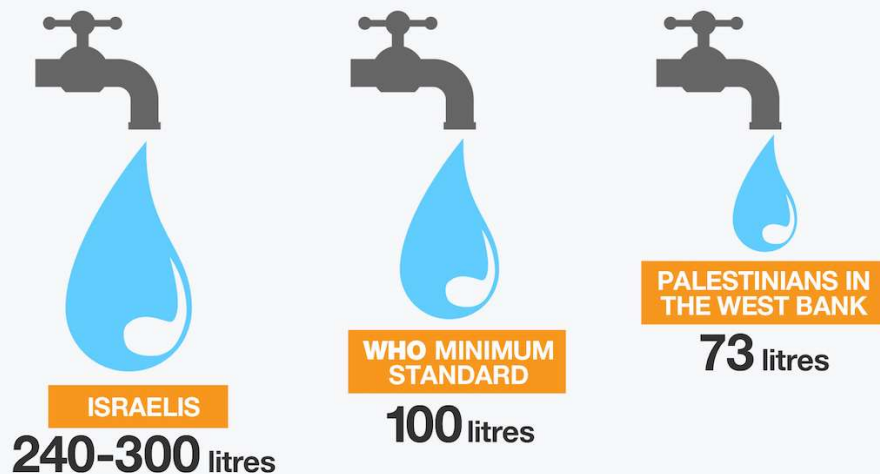
# BETHLEHEM BESIEGED



## Israel's water wars

Every year the water supply to Palestinian towns and villages in the West Bank is cut off for days - if not weeks.

Here is how much water each person in the West Bank has access to per day



In Area C, under Israeli administrative and military control  
**180 Palestinian communities**  
are not connected to the water network

Vulnerable Palestinian households spend up to  
**one fifth**  
of their salary on water



Sources: EWASH | United Nations Office for the Coordination of Humanitarian Affairs (OCHA)



ALJAZEERA



# L'archipel de Palestine orientale

